

February - March 2020

Owen Theatre



graveyard shift

THEATRE
GOODMAN

PLAYBILL®

contents

features

- 2 A Note from the Artistic Director
- 4 in this moment
- 6 Second Act

the production

- 19 *graveyard shift*
- 21 Artist Profiles

the theater

- 12 Now & Next
- 16 Accessibility
- 29 About Goodman Theatre
- 30 Staff
- 33 Leadership
- 36 Support

Chicago's theater since 1925, Goodman Theatre is a not-for-profit arts and civic organization in the heart of the Loop, distinguished by the excellence and scope of its artistic programming and community engagement. Learn more at GoodmanTheatre.org.

In case of an emergency during the performance, please call Guest Services at 312.443.5555.

GOODMAN THEATRE

Managing Editor: Jaclyn Jermyn
Editors: Neena Arndt
Joe Giovannetti
Denise Schneider
Contributing Writers: Neena Arndt
Thomas Connors
korde arrington tuttle
Graphic Designer: Alma D'Anca

Goodman Theatre
170 N. Dearborn St.
Chicago, IL 60601

Box Office: 312.443.3800
Admin Offices: 312.443.3811

PLAYBILL

CEO & President: Philip S. Birsh
Chief Financial Officer: Shamindra Jagnanan
Vice President: Alex Birsh
Director of Manufacturing: Robert Cusanelli

Senior Vice President: Clifford S. Tinder
Managing Editor, Classic Arts: Damian Fowler
Art Director: Kesler Thibert
Chicago Editor: Thomas Connors
Senior Production Manager: Maude Popkin
Prepress Manager: Sean Kenny
Creative Services Manager: Dean Greer

Managing Program Editor: Matt Bonanno
Program Editors: Christy Admiraal
Katie Labovitz
Brian Libfeld
Khadijah Rentas
Andrew Rubin
Stephen Vratos

Publisher & Chief Revenue Officer: Glenn Shaevitz
Associate Publishers: Jolie Schaffzin
Michel Manzo

Director, Theatrical Sales: Nicholas Foster
Senior Director, Advertising: Joshua Stone
West Coast Sales Director: Jacqui Dziak
Director of Restaurant Sales: Clara Barragán
Digital Media Manager: Katie Clooney-Gainey

Chicago Account Executives
Jill Wettersten
773.744.9074 | jwettersten@playbill.com
Gail Bilenko
847.346.8627 | gbilenko@playbill.com

Chairman: Arthur T. Birsh
Vice President: Joan Alleman
Secretary/Treasurer: Shamindra Jagnanan

PLAYBILL® is published by PLAYBILL Incorporated, 729 Seventh Avenue, 4th Floor, New York, NY 10019. Copyright 2020 – by PLAYBILL Incorporated.

All Rights Reserved. PLAYBILL® is a Registered Trademark of PLAYBILL Incorporated.

PLAYBILL

welcome



In the theater, we reflect life on stage, but many of the best plays also refract it, showing audiences new angles of our complex world. In *graveyard shift*, playwright korde arrington tuttle grabs a story from the headlines, then bends and fictionalizes it so that we can more thoroughly examine its resonances and plumb its emotional depths. I am thrilled to present this world premiere production, which marks korde's Goodman debut.

A current playwright-in-residence at Lincoln Center Theater, korde uses the story of Sandra Bland as the starting point for his play. In 2015, Sandra—a 28-year-old African American woman—moved from the Chicago area to Prairie View, Texas, hoping to start a job at her alma mater, Prairie View A&M University. But before she could begin her new life, Prairie View police officer Brian Encinia pulled her over, forced her out of her car and arrested her, though her only offense was a failure to signal a lane change. In *graveyard shift*, korde creates the character Janelle, a young woman who moves from Chicago to Prairie View for a new job, and to move in with her fiancé, Kane. Though Janelle shares some traits with Sandra, korde makes no attempt to recreate Sandra's character or complete life story. Through his deftly poetic dialogue and rich character development, korde lays bare the human cost of senseless bigotry and allows us emotional access to Sandra's story—and the stories of so many who suffer at the hands of police.

Making her Goodman debut along with korde is director Danya Taymor, whose recent credits include *Pass Over* at Steppenwolf and *Daddy* at the Vineyard Theatre and the New Group. Danya has worked closely with korde during the play's development process, including at our 2018 *New Stages* Festival. During that festival, I sensed Danya's keen understanding of korde's work and admired her poetic staging; I am pleased to welcome her as a part of our 2019/20 Season.

Because racial tensions in our nation have only intensified in the years since Brian Encinia pulled Sandra Bland from her car, *graveyard shift* is a vital, pressing work. I look forward to the discussions it will provoke as we all struggle—in both personal and political realms—to navigate the racial problems we have so far failed to eradicate.

A stylized, handwritten signature in black ink, appearing to read 'R. Falls'.

Robert Falls
Artistic Director of Goodman Theatre

PLAYBILL

in this moment

By korde arrington tuttle



korde arrington tuttle

how does it feel to be where you are?
how do you feel in your body?
take a moment to locate where
in your body you feel the
sensation of being
most alive

from on your way to where you are
in your body in this physical
location what experiences
are still vibrating inside of
you asking for your
acknowledgment?

where are
you curious?

what parts of
your body are
singing?

where do
you ache?

what is asking
to be released?

no matter what
kind of day you've
had imagine yourself smiling

maybe you're already smiling
if so, smile harder
just for fun

notice how the
simple act of lifting the
corners of your mouth toward
your ears costs you nothing notice
how even if it makes you feel silly there
are invisible strings attached to
your heart that also lift in
response to the
corners of your
mouth

if you feel
so inclined eye
invite you to share
what's on your face
with someone
near you

see what happens
just for fun
because
you can

(did you
do it? what
happened?)

how does it feel to be where you are?
how do you feel in your body?

if you are reading this note, eye
congratulate you on living into this new
decade. the year is 2020. the world
is changing rapidly. you are not who
you were a few months ago. america
is not what it was a few months ago. a
few years ago. we find ourselves in the
midst of an awakening. collectively, we
crack infantile eyes, opening to a world
of possibility. healing. clarity. power.

it has not cost us nothing.

i'm not sure how you found your way
to the goodman theatre today, but
i'm grateful for your presence. the
entire universe has been conspiring for
your arrival. who knows why. maybe to
share a smile with a stranger in need
of being seen.

who knows why.

alongside that larger why is the more
obvious why. you're here to see a show.

good news: we've been waiting for you.
the experience we've prepared requires
only your presence. that's it. relax.
notice your breathing. the expansion +
contraction of your lungs. take a moment.
try for a few larger breaths than you might
normally. just for fun. costs you nothing.

settle.

graveyard shift meditation

this experience was constructed in
such a way that places you at the
center. allow any thoughts having to
do with whether or not you'll 'get it' to
drift away. notice them floating away.
allow any anxieties you may be holding
around identity politics to drift away.
if you're able, allow even any notions
of good + bad to drift away. this
experience belongs to all of us.
it's yours.

you're here because you're supposed
to be. your humanity qualifies you
as an expert in what you're going to
experience. you are enough, as are we
all. all of the time.

at the conclusion of this
experience eye ask
that you pose to
yourself two
questions:

how does it feel to be where you are?
how do you feel in your body?

thank you for your participation in this
experience.

eye appreciate your presence.

breathe.

*korde arrington tuttle is the
playwright of graveyard shift.*

Second Act

graveyard shift Offers Returning Creatives the Chance to Dig Deeper for the World-Premiere Production

By Thomas Connors

Aneisa Hicks



Photo by Cody Nieset.

For 16 years, Goodman Theatre's *New Stages Festival* has played a key role in helping playwrights get their work out into the world, but they aren't the only ones who learn and grow as a show finds its legs. Directors and actors, too, benefit from the process. And when a new play is selected for a full production—such as korde arrington tuttle's *graveyard shift*—there's a deep satisfaction all around.

"*New Stages* allows for a true investigation of the play, which includes a rigorous exploration of its physical life," says director Danya Taymor, who also directed the festival's 2018 rendition of

graveyard shift. "I can't wait to be back with korde and deepen our work bringing this story to light. It is a rare gift for a director to get to attempt a piece more than once. There's so much more we know about how the play works this time around."

graveyard shift echoes the story of Sandra Bland, the Illinois woman found hanged in a Texas jail cell after being arrested for a reported traffic violation in 2015. Aneisa Hicks, who is returning to play the character Janelle, relished the collaborative nature of the *New Stages* experience. "It isn't uncommon for the playwright to be in the room with new work, but what made this special is that korde was in conversation with all of us and not just the director," she says. "He looked to us to help him find more of the characters' voices. I felt that I was more fully invited on the journey."

After building on her initial exploration of the text, Taymor turned her attention to the theater space itself. "It felt important for the audience to witness this story as a community, because it concerns all of us as Americans and human beings," shares Taymor. "The audience envelops the stage, evoking to me the sense of a town hall community meeting."

Looking back at that staged reading, Hicks recalls the effect the play had on audiences. "Black audience members felt very heard and seen," she says. "In this kind of work, you will also find that there are those who have their lines drawn in the sand about how they feel." For Hicks, the chance to revisit the thought-provoking role is a special opportunity. "I am really lucky, excited and blessed to tell this story and help to create a space for people to learn, heal, grow, feel and be challenged."

Thomas Connors is a Chicago-based freelance writer and the Chicago Editor of Playbill.

A "nasty-teen comedy...
wonderfully refreshed
and deepened" —The New York Times



SCHOOL GIRLS; OR, THE AFRICAN MEAN GIRLS PLAY

By Jocelyn Bioh, Directed by Lili-Anne Brown

MARCH 7 – APRIL 12

The reigning queen bee at Ghana's most exclusive boarding school sets her sights on the Miss Universe pageant, but a new student unexpectedly changes the game.

312.443.3800 | GoodmanTheatre.org

Groups of 10+ only: 312.443.3820

JPMORGAN CHASE & CO.
Major Corporate Sponsor

ITW pwc
Corporate Sponsor Partners

Critic's Pick logo courtesy The New York Times.
© 2017 The New York Times Company. All rights reserved. Used under license.

THEATRE
GOODMAN

**"A DEEPLY MOVING
MEDITATION ON HOPE, CHANGE
AND DESPAIR"**

-The New York Times



MOLLY SWEENEY

BY **BRIAN FRIEL**
DIRECTED BY **ROBERT FALLS**

Blind since infancy, Molly agrees to a procedure that will restore her sight. But is it she who benefits most— or her ambitious spouse, or her doctor's career?

MARCH 27 – APRIL 26

Spend your summer at Goodman Theatre!



Are you a Chicagoland student between ages 14-18?
If so, you're invited to apply for our two summer programs:
PlayBuild Youth Intensive and **Musical Theater Intensive**,
which both culminate in a public showcase!

Learn more at GoodmanTheatre.org/PlaybuildYouth and
GoodmanTheatre.org/MusicalTheaterIntensive.

PB

Katten

Corporate Sponsor
Partner

American
Airlines

Contributing
Sponsor

GoodmanTheatre.org
312.443.3800

Groups of 10+ only: 312.443.3820

THEATRE
GOODMAN

TEACHER PROFESSIONAL DEVELOPMENT

Use theater to invigorate your classroom, regardless of what subject you teach! Goodman Theatre offers **FREE** arts integration-based professional development for teachers in and around Chicago.

Check out our programs and RSVP today!
GoodmanTheatre.org/TeacherWorkshops

DRAMATIC INTEGRATION

Saturday, February 29 | 10am-3pm

Learn how to use the arts to teach across all subject areas.

CREATING YOUR ACCESSIBLE CLASSROOM

Saturday, March 28 | 10am-2pm

Incorporate inclusion best practices to support diverse learners and trans/gender non-conforming students.

STAGE CHEMISTRY

Saturday, April 18 | 10am-1pm

Create engaging STEM lessons in an interactive technical theater workshop.

CLASSROOM AS COMMUNITY

Friday, February 7 | 5-10pm

+Saturday, February 8 | 10am-2pm

+1 hour-long phone meeting post-workshop dates

A peer learning opportunity for educators to explore teaching as social justice, and to understand how issues of personal identity and social location influence their praxis.

**Participants must attend both workshop dates and the phone meeting.

TEACHING AUGUST WILSON

Saturday, March 21 | 10am-3pm

Examine how to teach one of America's greatest playwrights with Walter Director of Education & Engagement Willa J. Taylor.

DID YOU KNOW?

Programs are offered **FREE OF CHARGE.**



95% of the students in our programs come from **CHICAGO PUBLIC SCHOOLS** and **85%** of them are **LOW INCOME.**

After training, **90% OF TEACHERS** say the Goodman's methods improve student performance and make them better educators.



Students in our Stage Chemistry workshops experience **HANDS-ON STEM LEARNING** through technical theater topics from pulleys to acoustics.

now & next

Join us for these Goodman Theatre events.

February 16 at 5:30pm *Artist Encounter*

Join *graveyard shift* director Danya Taymor and playwright korde arrington tuttle in a pre-show reception with complimentary food and drinks as they discuss the process of creating *graveyard shift*.



March 7 – April 12 *School Girls; Or, the African Mean Girls Play*

This “gleeful African makeover of an American genre” (*The New York Times*) spotlights the universal similarities—and glaring differences—of teenage girls around the globe. In the Albert Theatre.



March 27 – April 26 *Molly Sweeney*

Blind since infancy, Molly agrees to a procedure that will restore her sight. But is it she who benefits most—or her ambitious spouse, or her doctor's career? In the Owen Theatre.



PLAYBILL

For details about these events and more, visit GoodmanTheatre.org or call 312.443.3800.



THE OUTSIDERS

Based on the Novel by S.E. Hinton and Francis Ford Coppola's Motion Picture, Book by **Adam Rapp**, Music and Lyrics by **Jamestown Revival** (Jonathan Clay and Zach Chance) and **Justin Levine**, Directed by **Liesl Tommy**

STARTS JUNE 2020

The story that defined a generation comes to the stage—in a groundbreaking new musical! Don't miss the aching souls and romantic dreams of Ponyboy Curtis, Johnny Cade and their band of greasers, retold for a new generation.

**TICKETS NOW AVAILABLE FOR
MEMBERSHIPS & GROUPS OF 15+ ONLY!**

For information on discounted performances, contact **Groups@GoodmanTheatre.org** or **312.443.3820**.



ComEd
Official Lighting
Sponsor

312.443.3800 | GoodmanTheatre.org
Groups of 15+ only: 312.443.3820

GOODMAN THEATRE

your visit | our recommendations

USHERING

Love theater and want to volunteer as a Goodman usher?

E-mail **Ushering@GoodmanTheatre.org** to learn more.

HOTELS

Hilton Garden Inn Chicago Downtown Riverwalk
66 East Wacker Place
312.920.6666

Homewood Suites
40 E Grand Ave
312.644.2222

RESTAURANTS

Petterino's
150 N Dearborn
312.422.0150

Catch Thirty Five
35 W Wacker
312.346.3500

Katana Chicago
339 N Dearborn
312.877.5544

Roanoke
135 W Madison
312.940.3760

Stock and Ledger
70 W Madison
312.754.0395

STK Chicago
9 W Kinzie
312.340.5636

The Florentine
151 W Adams
312.660.8866

Tortoise Supper Club
350 N State
312.755.1700

Trattoria No. 10
10 N Dearborn
312.984.1718

CATERERS

Blue Plate Catering
312.377.0925

Connie's Pizza
312.266.6437

Jewell Events Catering
312.829.3663

Sopraffina Marketcafé
312.984.0044

**True Cuisine/
Sweet Baby Ray's**
312.724.6000



**Let us know what you
thought of the play!**



Use the hashtag **#graveyardshift** to connect with the Goodman on Facebook, Twitter and Instagram.



Facebook.com/GoodmanTheatre



Twitter.com/GoodmanTheatre



Instagram.com/GoodmanTheatre

accessibility

AD Audio-Described Performance and Touch Tour

An onstage Touch Tour precedes the performance, beginning at 12:30pm.

graveyard shift | Sunday, March 1 at 2pm

School Girls | Saturday, April 4 at 2pm

Molly Sweeney | Sunday, April 19 at 2pm

Unlock tickets with promo code **AUDIO**.



American Sign Language (ASL) Interpreted Performance

graveyard shift | Saturday, March 7 at 2pm

School Girls | Wednesday, April 8 at 7:30pm

Molly Sweeney | Saturday, April 25 at 2pm

Unlock tickets with promo code **SIGN**.

SCOTT AND LENORE ENLOE

Accessibility Sponsors

OC Open-Captioned Performance

graveyard shift | Saturday, March 8 at 2pm

School Girls | Saturday, April 11 at 2pm

Molly Sweeney | Sunday, April 26 at 2pm

Unlock tickets with promo code **OPEN**.

ELIZA AND NEIL STERN

Open-Captioned Performance Sponsors

The Goodman is proud to offer an inclusive range of programs and services that help make performances accessible to more audiences, including enhanced performances, accessible seating, braille and large print programs and complimentary Assistive Listening Devices and Sensory Bags. Complimentary tickets for Personal Care Assistants and professional caregivers are also available. For additional information, assistance or an accommodation not listed, visit our Guest Services Desk today or e-mail Access@GoodmanTheatre.org.

More details about accessibility services can be found at GoodmanTheatre.org/Access.

major contributors

Goodman Theatre proudly thanks the following contributors for their generous support of the 2019/2020 Season.

Abbott/Abbott Fund

Lester and Hope Abelson Fund
For Artistic Development

Allstate Insurance Company

Susan and James Annable

American Airlines

Paul M. Angell Family Foundation

The Edith-Marie Appleton
Foundation/Albert and
Maria Goodman

Bank of America

Roger and Julie Baskes

BMO Harris Bank

The David Q. and Mary A.
Bell Foundation

Joyce Chelberg

The Chicago
Community Trust

Joan and Robert Clifford

ComEd/Exelon

Patricia Cox

The Crown Family

Julie M. Danis and
Paul F. Donahue

Ruth D. and Ken M. Davee
New Works Fund

Shawn M. Donnelley and
Christopher M. Kelly

Fifth Third Bank

David and Alexandra Fox

Julius N. Frankel Foundation

Ruth Ann M. Gillis and
Michael J. McGuinnis

Denise and John Ginascol

Goodman Theatre
Women's Board

Illinois Arts Council Agency
ITW

The Joyce Foundation

KPMG

The John D. and Catherine T.
MacArthur Foundation

Nancy Lauter McDougal

James and Madeleine McMullan
Family Foundation

Swati and Bobby Mehta

JPMorgan Chase

The Elizabeth Morse
Charitable Trust

Northern Trust Bank

PepsiCo

PNC

Polk Bros. Foundation

Carol Prins and John Hart

Pritzker Pucker Family Foundation

The Rhoades Foundation

Alice and John Sabl

The Michael A. Sachs
Family Foundation

Cynthia and
Michael R. Scholl

Shubert Foundation

The Harold and Mimi Steinberg
Charitable Trust

The Wallace Foundation

Kimbra and Mark Walter

As of January 2020

presents

graveyard shift

By

korde arrington tuttle

Directed by

Danya Taymor

Set Design by

Kristen Robinson

Costume Design by

Montana Levi Blanco

Lighting Design by

Marcus Doshi

Original Music and Sound Design by

Richard Woodbury

Casting by

Adam Belcuore, CSA

Lauren Port, CSA

Dramaturgy by

Neena Arndt

Production Stage Manager

Rebekah Heusel*

graveyard shift was originally developed and produced in Goodman Theatre's 2018 *New Stages* Festival—Robert Falls, Artistic Director; Roche Schulfer, Executive Director—and San Francisco Playhouse's 2018/2019 Sandbox Series—Bill English, Artistic Director; Susi Damilano, Producing Director.

graveyard shift was developed at the Ojai Playwrights Conference: Robert Egan, Artistic Director/Producer.

LAURENTS/HATCHER FOUNDATION
Support of *graveyard shift*

PLAYBILL

graveyard shift

cast

Brian..... **Keith D. Gallagher***
 Elise **Rae Gray***
 Janelle..... **Aneisa J. Hicks***
 Trish..... **Lia D. Mortensen***
 Kane..... **Kyle Vincent Terry***

Assistant Director..... **Regina Victor**
 Script Supervisor..... **Elliott Hartman**
 Intimacy Consultant..... **Sasha Smith**

Understudies never substitute for a listed player unless an announcement is made at the beginning of the play.

Debo Balogun—Kane; Sam Boeck—Brian; Taylor Cannon—Janelle; Evelyn Gaynor—Elise/Trish

The video and/or audio recording of this performance by any means whatsoever are strictly prohibited.

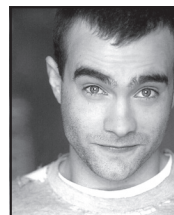
Goodman productions are made possible in part by the Illinois Arts Council, a state agency.

Goodman Theatre is a constituent of the Theatre Communications Group, Inc., the national service organization of nonprofit theaters; the League of Resident Theatres; the Illinois Arts Alliance and the American Arts Alliance; the League of Chicago Theatres; and the Illinois Theatre Association.

Goodman Theatre operates under agreements between the League of Resident Theatres and Actors' Equity Association, the union of professional actors and stage managers in the United States; the Society of Stage Directors and Choreographers, Inc., an independent national labor union; the United Scenic Artists of America, Local 829, AFL-CIO and the Chicago Federation of Musicians, Local No. 10-208, American Federation of Musicians. House crew and scene shop employees are represented by the International Alliance of Theatrical Stage Employees, Local No. 2.

*Denotes member of Actors' Equity Association, the union of professional actors and stage managers in the United States.

profiles



KEITH D. GALLAGHER* (*Brian*) returns to the Goodman after appearing in *Shining City*. Chicago: *Mary Shelley's Frankenstein*, *Beyond Caring* (Lookingglass Theatre Company); *Breach* (Victory Gardens); *Mary Page Marlowe*, *Marie Antoinette* (Steppenwolf Theatre Company); *The Gospel of Franklin*, *Man In Love* (Steppenwolf First Look); *Awake and Sing*, *Lieutenant of Inishmore* (Northlight Theatre); *Arcadia* (Court Theatre); *The Real Thing* (Remy Bumppo); *Tracks* (TUTA). Regional: *Mary Shelley's Frankenstein* (McCarter Theatre Center); *Macbeth* (Denver Center for the Performing Arts); *A Raisin in the Sun* (Geva Theatre Center); *The Gospel*

According to James (Indiana Repertory); *Lieutenant of Inishmore* (Repertory Theatre of St. Louis). TV: *Chicago Med*, *Chicago P.D.*, *Chicago Fire*, *Empire*. Film: *Orders*.



RAE GRAY* (*Elise*) returns to the Goodman, where she appeared in *The Little Foxes* and two seasons of *A Christmas Carol*. Other Chicago credits: *Slowgirl*, *The Book Thief*, *Domesticated*, *Wedding Band* (Steppenwolf); *King Charles III* (Chicago Shakespeare); *Circle Mirror Transformation* (Victory Gardens); *North China Lover* (Lookingglass); *The Real Thing* (Writers Theatre); *Sunday in the Park with George* (Ravinia); *Inherit the Wind* (Northlight); *The Crucible*, *Cry of Players* (TimeLine); *Oliver*, *State Fair* (Marriott); *Meet Me in St. Louis* (Drury Lane). Broadway: *The Real Thing* (Roundabout Theatre). International:

The Beacon (Druid Theatre/Gate Theatre, IRL). Regional: *Queens* (La Jolla Playhouse); *Slowgirl* (Geffen Playhouse). TV: *Fear the Walking Dead*, *Grace and Frankie*, *For the People*, *Sea Oak*, *Boardwalk Empire*, *Shameless*, *The Resident*, *Bull*, *Adventure Time*, *Chicago Fire*, *PD* and *Med*. Film: *Slice*, *I Do...Until I Don't*, *Mona Lisa and the Blood Moon*, *The Robbery* (Sundance Selection), *Dismissed*. Rae is a graduate of the University of Chicago.



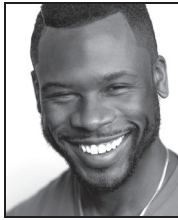
ANEISA J. HICKS* (*Janelle*) returns to Goodman Theatre where she appeared as "Janelle" in the *New Stages* Festival production of *graveyard shift*. Chicago credits include *Dark at the Top of the Stairs* (Eclipse Theatre); *End of TV* (Manual Cinema). Regional credits include *Pride and Prejudice* (Long Wharf Theatre); *Her Portmanteau* (A.C.T.). Television credits include *Chicago Med*, *The Chi* and *Chicago Justice*. Aneisa is represented by Shirley Hamilton Talent Inc.



LIA D. MORTENSEN* (*Trish*) returns to the Goodman where she last appeared in *Rabbit Hole*. Chicago credits: *Romeo and Juliet*, *Pericles*, *Measure for Measure*, *All's Well That Ends Well* (Chicago Shakespeare Theatre); *Mystery of Love and Sex*, *Company* (Writers Theatre); *An Inspector Calls*, *Night and Day* (Remy Bumppo Theatre Company); *Cymbeline* (First Folio Theatre); *Faith Healer* (The Den Theatre); *The Big Meal* (American Theater Company); *City of Conversation*, *Ten Chimneys*, *Lady Windermere's Fan*, *Sky Girls*, *Talley's Folly* (Northlight Theatre); *No Wake* (Route 66 Theatre); *Closer*, *Faith Healer* (Steppenwolf Theatre

Company); *Ghosts*, *All's Well That Ends Well*, *Measure for Measure*, *Serious Money* (Court Theatre). Film: *A Nightmare on Elm Street* (2010), *Blink*, *Consumed*, *Market Value*, *View from Tall*, *Resurrecting McGinns*, *Soul Sessions*. Television: *Empire*, *Shameless*, *Chicago Med*, *Soundtrack*, *Electric Dreams*, *Crisis*, *Easy Abby*, *Chicago Fire*, *The Onion*, *Chicago Code*, *Family Practice*.

profiles



KYLE VINCENT TERRY* (*Kane*) makes his Goodman Theatre debut. Recent credits: *Othello* (New York Theatre Workshop); *Man in The Ring* (Huntington); *A Christmas Carol* (Trinity Rep). TV/Film: *Gotham*, *Elementary*, *SMILF*, *Blindspot*, *Tommy* and *For Life*. Proudly born and raised in Chicago, Kyle found a love of theater as a child in the audience. He thanks the people of Chicago for educating, strengthening and caring for him always.

korde arrington tuttle (*Playwright*) is a multi-disciplinary artist from Charlotte, NC. His work has been seen at Ojai Playwrights Conference, The Fire This Time Festival, HomeBase Theatre Collective, The Movement Theatre Company, 2015's AfroFuturism Conference and The Tenth Magazine. tuttle is a recipient of the Steinberg Playwriting Fellowship and a finalist for both 2017 Alliance/Kendeda National Graduate Playwriting Contest and City Theatre National Award for Short Playwriting Contest. Film credits include *Them: Covenant* and *Mix Tape*. tuttle is a current playwright-in-residence at Lincoln Center Theater and a Middle Voice Theatre Company Member at Rattlestick Playwright's Theater. He received his MFA from The New School.

DANYA TAYMOR (*Director*) is a New York-based director and translator. Recent credits include *Pass Over*, *Familiar* (Steppenwolf Theatre Company); *Daddy* (Vineyard Theatre, The New Group); *queens* (LCT3); *The Sensuality Party* (The New Group); *Esai's Table* (Cherry Lane Mentor Project); *Wyoming* (Lesser America); *My Daughter Keeps Our Hammer*, *The Place We Built*, *I Hate Fucking Mexicans* (The Flea Theater, where she is an Associate Artist). Taymor is an alumna of the Women's Project Lab, Sundance Theatre Lab, Lincoln Center Theater Directors Lab, Van Lier Fellowship and the 2050 Fellowship at NYTW, where she is a Usual Suspect.

KRISTEN ROBINSON (*Set Designer*) is a New York City-based set designer. Selected Credits: *In the Green* (LCT3); *[PORTO]* (WP Theater); *Heart of Darkness* (Baryshnikov Arts Center); *Minor Character* (Under the Radar Festival); *Everybody Black*, *The Thin Place* (Humana Festival at Actors Theatre of Louisville); *Miller Mississippi* (Long Wharf Theatre); *Familiar* (Steppenwolf Theatre); *A Flea in Her Ear* (Westport Country Playhouse); *Ethel* (Alliance Theatre). She is the Assistant Professor of Scenic Design at Purchase College. A Princess Grace Fellow whose work ranges from site-specific installations to outdoor Shakespeare, she holds her M.F.A. from Yale University. kristenrobinsondesign.com | USA 829.

MONTANA LEVI BLANCO (*Costume Designer*) makes his Goodman Theatre debut. Off-Broadway: *A Strange Loop* (Playwrights Horizons/Page 73); *Ain't No Mo'* (Public); *Daddy* (New Group/Vineyard); *Fairview*, *Is God Is* (Soho Rep); *The Death of the Last Black Man*, *Fabulation*, *In the Blood* (Signature); *The House That Will Not Stand*, *Red Speedo*, *Nat Turner* (NYTW); *Fefu and Her Friends*, *He Brought Her Heart in a Box* (TFANA); *Pipeline*, *Ghost Light*, *War* (Lincoln Center); *Dragon Spring Phoenix Rise* (Shed); *O, Earth* (Foundry). Awards: Special Drama Desk, Lucille Lortel, Henry Hewes and OBIE. Education: Oberlin College and Conservatory of Music, Brown University and the Yale School of Drama. montanaleviblanco.com

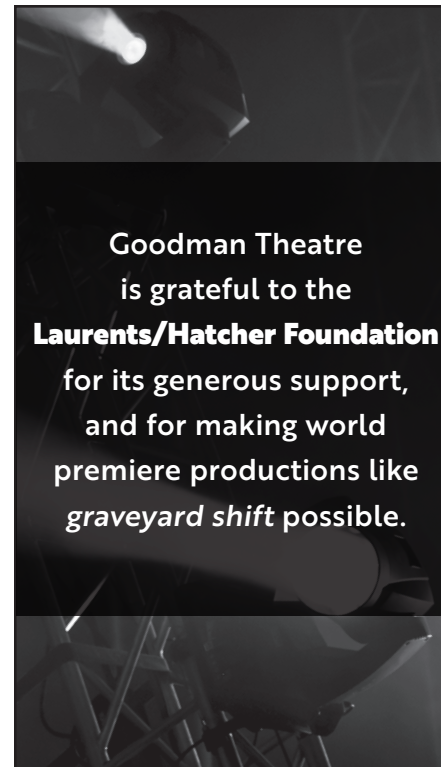
MARCUS DOSHI (*Lighting Designer*) returns to the Goodman where previous credits include *Measure for Measure* and *Upstairs Concierge*. An international theater maker, Marcus is Professor and Associate Chair of Theatre at Northwestern University. He designs lighting and sets for theater, opera and dance, and collaborates with artists and architects on a variety of non-performance-based work. His work has been seen on and off-Broadway, in Chicago (Lyric

profiles

Opera, Steppenwolf, Chicago Shakespeare, Court, Hubbard Street Dance); extensively at most major regional theatres and opera companies; and internationally in 18 countries across five continents, notably at La Comédie Française, Dutch National Opera, La Monnaie, Sydney Festival and National Arts Centre Mumbai. He is a graduate of Wabash College and Yale School of Drama. marcusdoshi.com

RICHARD WOODBURY (*Original Music and Sound Design*) is the resident sound designer at the Goodman, where credits include original music and sound design for *The Winter's Tale*, *Sweat*, *An Enemy of the People*, *Blind Date*, *Ah, Wilderness!*, *Uncle Vanya*, *2666* and many others. Other recent Chicago credits include *True West*, *HIR* and *Linda Vista* (Steppenwolf Theatre Company); *Smart People* and *The Scene* (Writers Theatre). Richard's work has also been featured on Broadway, internationally and at regional theaters across the United States. He has received Jeff, Helen Hayes, Ovation and IRNE Awards for Outstanding Sound Design and the Ruth Page Award for Outstanding Collaborative Artist.

REBEKAH HEUSEL* (*Production Stage Manager*) returns to the Goodman after working on *In the Sick Bay of the Santa Maria*. Regional credits include *Things I Know to be True*, *Songs for Nobodies*, *Holmes & Watson* (Milwaukee Repertory Theater); *Macbeth* (Great River Shakespeare Company); *The Merchant of Venice* (Compagnia de' Colombari); *Much Ado About Nothing* (Optimist Theatre); *Mary Jane* and *Cymbeline* (Yale Repertory Theatre); *The Little Mermaid Jr.* (Children's Theatre Company); *Blessing* (The Yale Institute for Music Theatre).



Goodman Theatre
is grateful to the
Laurents/Hatcher Foundation
for its generous support,
and for making world
premiere productions like
graveyard shift possible.

PB

profiles

ROBERT FALLS (*Goodman Theatre Artistic Director*) recently revived his 2014 production of *Don Giovanni* for the Lyric Opera, and he will direct Brian Friel's *Molly Sweeney* at the Goodman this spring. Last season, Falls directed Shakespeare's *The Winter's Tale* and David Cale's *We're Only Alive for a Short Amount of Time* (Goodman Theatre, Public Theater). Other recent productions include *Pamplona*, starring Stacy Keach; Rogelio Martinez's *Blind Date*; and his own original adaptation of Ibsen's *An Enemy of the People*. Recent credits also include *2666*, adapted from Roberto Bolaño's epic novel and co-directed with Seth Bockley; *The Iceman Cometh*, starring Nathan Lane and longtime collaborator Brian Dennehy (Brooklyn Academy of Music); and Beth Henley's *The Jacksonian*. Falls' Broadway productions include *Death of a Salesman*, starring Dennehy; *Long Day's Journey into Night*, starring Dennehy, Vanessa Redgrave, Philip Seymour Hoffman and Robert Sean Leonard; Eric Bogosian's *Talk Radio*; the American premiere of Conor McPherson's *Shining City*; and Horton Foote's Pulitzer Prize-winning *The Young Man from Atlanta*. His Broadway production of Elton John and Tim Rice's *Aida*, for which he also co-wrote the book, continues to be produced around the world. Previous Goodman productions include, most notably, Arthur Miller's *Finishing the Picture*; *The Seagull*; *Uncle Vanya*; *Measure for Measure*; *King Lear*; *Desire Under the Elms*; *The Misanthrope*; *Pal Joey*; *Galileo*; the American premiere of Alan Ayckbourn's *House and Garden*; the world premieres of Rebecca Gilman's *A True History of the Johnstown Flood*, *Blue Surge*, *Dollhouse* and *Luna Gale*; and Gilman's *Soups, Stews, and Casseroles: 1976*. Falls' honors for directing include a Tony Award (*Death of a Salesman*), a Drama Desk Award (*Long Day's Journey into Night*) an Obie Award (*subUrbia*), a Helen Hayes Award (*King Lear*) and multiple Jeff Awards. For "outstanding contributions to theater," he has also been

profiles

recognized with such prestigious honors as the Savva Morozov Diamond Award (Moscow Art Theatre), the O'Neill Medallion (Eugene O'Neill Society), the Distinguished Service to the Arts Award (Lawyers for the Creative Arts) and the Illinois Arts Council Governor's Award. Falls was inducted into the Theater Hall of Fame in 2015.

ROCHE EDWARD SCHULFER (*Goodman Theatre Executive Director*) started working in the Goodman Theatre box office and became executive director in 1980. Since that time he has overseen more than 350 productions including more than 150 premieres. He initiated the Goodman's annual production of *A Christmas Carol*, which celebrated 42 years as Chicago's leading holiday arts tradition in 2019. In partnership with Artistic Director Robert Falls, Mr. Schulfer led the establishment of quality, diversity and community engagement as the core values of Goodman Theatre. During their tenure, the Goodman has received numerous awards for excellence, including the Tony Award for Outstanding Regional Theater, recognition by *Time* magazine as the "Best Regional Theatre" in the U.S., the Pulitzer Prize for Lynn Nottage's *Ruined* and many Jeff Awards for outstanding achievement in Chicago area theater. Schulfer has negotiated the presentation of numerous Goodman Theatre productions to national and international venues. He coordinated the 12-year process to relocate the Goodman to the Theatre District in 2000. To mark his 40th anniversary with the Goodman, his name was added to the theater's "Walk of Stars." Schulfer was a founder and twice chair of the League of Chicago Theatres, the trade association of more than 200 Chicago area theaters and producers. He has been privileged to serve in leadership roles with Arts Alliance Illinois (the statewide advocacy coalition); Theatre Communications Group (the national

Goodman Theatre thanks the following individuals for their generous support!

**The Edith-Marie Appleton Foundation/
Albert and Maria Goodman**

Roger and Julie Baskes

Joan and Robert Clifford

David and Alexandra Fox

Kimbra and Mark Walter

2019-2020 Season Sponsors

Carol Prins and John Hart

2019-2020 Albert Season Sponsors

**The Michael A. Sachs
Family Foundation**

Education Season Sponsor

**Shaw Family Supporting
Organization**

New Work Season Sponsor

**Jeffrey W. Hesse and
Julie Conboy Hesse**

Directors Society Sponsors

Lynn Hauser and Neil Ross

Education and Engagement Sponsors

LEAVE YOUR LEGACY

"Long after you and I have spent our last night of the universe, footsteps will echo across the stage and, in a language that is universal, will announce their presence with song and surety. Embodied in them will be the duty of remembrance and celebration. The duty of exploration and preservation."

—August Wilson

Join the Spotlight Society by making a planned gift and ensure that the Goodman you enjoy today will be here for generations to come. For more information about estate gifts and the benefits of membership, contact MartyGrochala@GoodmanTheatre.org or call 312.443.5572.

THEATRE
GOODMAN
SPOTLIGHT SOCIETY

profiles

service organization for more than 500 not-for-profit theaters); the Performing Arts Alliance (the national advocacy consortium of more than 18,000 organizations and individuals); the League of Resident Theatres (the management association of over 70 leading U.S. theater companies); Lifeline Theatre; the Arts & Business Council and Theater Wit. Mr. Schulfer is honored to have been recognized with the League of Chicago Theater's Lifetime Achievement Award; Theatre Communication Group's Visionary Leadership Award; Actors' Equity Association for promoting diversity and equal opportunity in Chicago theater; the American Arts Alliance and Arts Alliance Illinois for arts advocacy; the Arts & Business Council for distinguished contributions to Chicago's artistic vitality; Chicago magazine and the Chicago Tribune as a "Chicagoan of the Year"; the City of Chicago; the Chicago Loop Alliance's "Illumination Award," honoring his commitment to Chicago's theater district; Columbia College Chicago for entrepreneurial leadership; the Joseph Jefferson Awards Committee for his partnership with Robert Falls; Lawyers for the Creative Arts; Lifeline Theatre's Raymond R. Snyder Award for Commitment to the Arts; Season of Concern for support of direct care for those living with HIV/AIDS and Vision 2020 for promoting gender equality and diversity in the workplace. He taught at the theater school at DePaul University, lectured annually on strategic planning in the arts at Southern Methodist University and frequently consults with local and national theater companies. Schulfer received a degree in economics from the University of Notre Dame where he served as cultural art commissioner and currently conducts an annual seminar on theater management. He received an Honorary Doctor of Fine Arts degree from North Central College in 2009. His celebrated presentation on the economics of the performing arts and business models in the theater industry, WHY NOT FOR PROFIT THEATER, has been seen by numerous theater companies and at national conferences over the past two years. Mr. Schulfer was born in Chicago and is a lifelong resident of the area.

Goodman Theatre salutes its outstanding supporters of *New Work*

**Ruth D. and Ken M.
Davee New Work Fund**
Major Support of New Work

**Pritzker Pucker
Family Foundation**
Major Support of New
Play Development

**The Harold and Mimi
Steinberg Charitable Fund**
Major Support of New
Work Development

**Shaw Family Supporting
Organization**
New Work Season Sponsor

**The Glasser and
Rosenthal Family**
Support of New Work

**Joan and Robert Clifford
Patricia Cox
Jeffrey Hesse and
Julie Conboy Hesse**

**Catherine Mouly and
LeRoy Carlson
Elizabeth Raymond and
Paul Hybel**
New Work Sponsors

PLAYBILL

PREMIERE SOCIETY

WHERE YOU BELONG

A theater family—just for you.

When you join Goodman Theatre's Premiere Society, you belong to a core group of Chicago theater champions. Premiere Society membership offers behind-the-scenes access and premium tickets, and provides the unique opportunity to meet others who share your love of the arts. **With this exclusive access to the Goodman, you'll find out how you can use your passion for theater to make a true impact.**

Through core support of the Goodman's productions, education programs and accessibility initiatives, Premiere Society donors directly impact the Chicago community for the better. For more information about the Premiere Society, contact Victoria Rodriguez, Manager of Individual and Major Gifts at VictoriaRodriguez@GoodmanTheatre.org or 312.443.3811, ext. 539.



"It's more than just coming to shows. It's about being a part of the Goodman."

Mark Hudson and Russell Johnson, Premiere Society since 2005

THEATRE | PREMIERE
GOODMAN | SOCIETY

about us

AMERICA'S "BEST REGIONAL THEATRE" (*Time* magazine), Goodman Theatre is a premier not-for-profit organization distinguished by the excellence and scope of its artistic programming and civic engagement. Led by Artistic Director Robert Falls and Executive Director Roche Schulfer, the theater's artistic priorities include new play development (more than 150 world or American premieres in the past three decades), large scale musical theater works and reimagined classics (celebrated revivals include Falls' productions of *Death of a Salesman* and *The Iceman Cometh*). Goodman Theatre artists and productions have earned two Pulitzer Prizes, 22 Tony Awards, over 160 Jeff Awards and many more accolades. In addition, the Goodman is the first theater in the world to produce all 10 plays in August Wilson's "American Century Cycle;" and its annual holiday tradition *A Christmas Carol*, now in its fourth decade, has created a new generation of theatergoers. The Goodman also frequently serves as a production partner with local off-Loop theaters and national and international companies by providing financial support or physical space for a variety of artistic endeavors.

Committed to three core values of Quality, Diversity and Community, the Goodman proactively makes inclusion the fabric of the institution and develops education and community engagement programs that support arts as education. This practice uses the process of artistic creation to inspire youth, lifelong learners and audiences to find and/or enhance their voices, stories and abilities. The Goodman's Alice Rapoport Center for Education and Engagement is the home of such programming, most offered free of charge, and has vastly expanded the theater's ability to touch the lives of Chicagoland citizens (with 85% of youth participants coming from underserved communities) since its 2016 opening.

Goodman Theatre was founded by William O. Goodman and his family in honor of their son Kenneth, an important figure in Chicago's cultural renaissance in the early 1900s. The Goodman family's legacy lives on through the continued work and dedication of Kenneth's family, including Albert Ivar Goodman, who with his late mother, Edith-Marie Appleton, contributed the necessary funds for the creation of the new Goodman center in 2000.

Today, Goodman Theatre leadership also includes the distinguished members of the Artistic Collective: Brian Dennehy, Rebecca Gilman, Henry Godinez, Dael Orlandersmith, Steve Scott, Kimberly Senior, Chuck Smith, Regina Taylor, Henry Wishcamper and Mary Zimmerman. David W. Fox, Jr. is Chairman of Goodman Theatre's Board of Trustees, Denise Stefan Ginascol is Women's Board President and Megan McCarthy Hayes is President of the Scenemakers Board for young professionals.

staff

ARTISTIC COLLECTIVE

Chuck Smith
Resident Director

Mary Zimmerman
Manilow Resident Director

Henry Godinez
Resident Artistic Associate

Brian Dennehy
Rebecca Gilman
Steve Scott
Kimberly Senior
Regina Taylor
Henry Wishcamper
Artistic Associates

Dael Orlandersmith
Artistic Associate and
Alice Center Resident Artist

ADMINISTRATION

John Collins
Managing Director

Lewis Warrick
Director of Finance and
Administration

Jodi J. Brown
Manager of the Business Office

Richard Glass
Director of IT

Marissa Ford
Associate Managing Director

Ashley Jones
Payroll Coordinator

Drew Blau
Company Manager

Owen Brazas
Systems Administrator

Ashley Donahue
Executive Assistant

ARTISTIC

Adam Belcuore
Managing Producer

Neena Arndt
Resident Dramaturg

Lauren Port
Casting Director

Ken-Matt Martin
Associate Producer

Jonathan L. Green
Literary Manager

Robert Falls
Artistic Director

Rachael Jimenez
Casting Associate

Julie Massey
Assistant to the Artistic Director

Emma Gruhl
Casting Assistant

Samantha Nieves
Producing Assistant

DEVELOPMENT

Dorlisa Martin
Director of Development

Martin Grochala
Associate Director of Development/
Senior Director of Major and
Planned Gifts

Jeff M. Ciaramita
Senior Director of Special
Events & Stewardship

Kate Welham
Senior Director of Institutional
Giving and Development Operations

Victoria S. Rodriguez
Manager of Individual and
Major Gifts

Amy Szerlong
Manager of Institutional Giving

Christine Obuchowski
Board Relations and
Major Gifts Manager

Jeannine Burgdorf
Prospect Research Manager

Joe Giovannetti
Development Communications
Coordinator

Mishari Lee Zambrano
Coordinator of Stewardship and
Community Engagement Events

Delaney Sterling
Annual Fund Coordinator

Daryn Robinson
Institutional Giving Assistant

Melanie Leftakes
Board Relations and Individual
Giving Assistant

EDUCATION & ENGAGEMENT

Willa J. Taylor
Walter Director of
Education & Engagement

Quenna Barrett
Associate Director of
Education & Engagement

Roche Schulfer
Executive Director

Adrian Abel Azevedo
Education & Engagement Associate

Sam Mauceri
School Matinee Series Coordinator

Liam Collier
Education & Engagement Assistant

MARKETING & SALES

Jay Corsi
Director of Marketing

Gabriela Jirasek
Director of Digital Strategy

Jenny Gargaro
Director of Advertising

Kimberly D. Furganson
Marketing Associate/
Group Sales Manager

Mary Alex Nosek
Marketing and Research Manager

Gavin Damore
Marketing Associate

Garrett Reeves
Digital Marketing Associate

Casey Chapman
Associate Director of
Outbound Sales

Shari Eklof
Outbound Sales Associate

William Opel
Outbound Sales Shift Supervisor

John Donnell
Linda Grossman
Robert Hunter Bry
Raymond James
John Paul Nelson
Matthew Padora
Hamid Razik
Byron Simpson
Peter Utman
Membership Sales/Fundraising

COMMUNICATIONS

Denise Schneider
Director of Communications

Jaclyn Jermyn
Publicity Coordinator

Laura Hooper Doughty
Creative Content Manager

Cori Lewis
Senior Designer, Brand Strategy

staff

Cecily Pincsak
Senior Designer, Creative Content

Alma D'Anca
Graphic Designer

Cody Nieset
Video Producer

Alberto Mendoza
Videographer

TICKET SERVICES

Erik Schnitger
Director of Ticket Services

Summer Snow
Associate Director of
Ticket Services

Rachael Swann
Ticket Services Manager

Rachel Robinson
Alex Meyer
Assistant Ticket Services Managers

Philip Lombard
Group Sales Representative

Scott Kloosterman
Mary Iris Loncto
Ron Popp
Shawn Schikora
Ticket Services Representatives

PRODUCTION

Scott Conn
Production Manager

Felicia Hall-Smith
Associate Production Manager,
Albert

Madeleine Borg
Associate Production Manager,
Owen

Amber Porter
Production Coordinator

STAGE MANAGEMENT

Rebekah Heusel
Production Stage Manager

Aryn Henderson
Floor Manager

SCENIC ART

Karl Kochvar
Resident Scenic Artist, USAA

Donna Slager
Scenic Artist

SCENERY

Mark Prey
Technical Director

Lydia Pustell
Associate Technical Director

Dave Stadt
Scene Shop Foreman

Sandy Anetsberger
William Czerwionka
Michael Frohbieter
Stephen Geis
Casey Kelly
Carpenters

Jordan Siragusa
Scene Shop Apprentice

Krissy Cralle
Jonathan Dean
Assistant Carpenters

James Norman
House Carpenter

Jess Hill
House Rigger Carpenter

Alison Perrone
Stagehand

Emily Lowney
Run Crew

PROPERTIES

Alice Maguire
Properties Supervisor

Christopher Kolz
Properties Carpenter

Jeff Harris
Properties Artisan

Kathryn Johnson
Assistant Properties Supervisor

Meghan Savagian
Props Assistant

Vanessa Thomas
Props Head

Scott Dickens
Assistant Props Carpenter

ELECTRICS

Gina Patterson
Lighting Supervisor

Preston Reynolds
Assistant Lighting Supervisor

Patrick Hudson
Electrics Head

Bill McGhee
Jay Rea
Sherry Simpson
Aimee Sweet
Electricians

Ali Wojcikiewicz
Michael Barahura
Matt Bearor
Electrics Overhire

Jessica Neill
Assistant Lighting Designer

SOUND

Richard Woodbury
Resident Sound Designer

David Naunton
House Audio Supervisor

Bradford Chapin
Audio Head

Claudette Przygoda
Sound Board Operator

COSTUMES

Heidi Sue McMath
Costume Shop Manager

Eileen Stacy
Assistant Costume Shop Manager

Kelly Rose
Costume Shop Coordinator

Jessica Rodriguez
Kara Tesch
Assistants to the Designer

Emily Robertson
Draper

Liz Taylor
First Hand

Allison Ernst
Stitcher

Susan Lemerand
Crafts

Jeneé Garretson
Wardrobe Supervisor

Yvette Wesley
Head Dresser

Evelyn Danner
Rueben Echoles
Costume Construction Apprentices

staff

FACILITIES

Frank Leyden
Facilities Manager

Patrick Feder
Lead Facilities Technician

Sharon Flowers
Facilities Technician

Valentino Davenport
Facilities Apprentice

Beverly Hatchett
Custodial Supervisor

Tawanda Brewer
Miguel Melecio
Randy Sickels
Custodians

Maurice Henry
Robert Williams
Part-time Custodians

Thomas Demke
Carlos Hernandez
Part-time Facilities Technicians

FRONT OF HOUSE

Chris Smith
Front of House Manager

Demi Smith
Special Events and House Manager

Andy Wilson
House Manager and
Accessibility Coordinator

Sean Grosshans
Lounge Lead

Rebecca Cao Romero
Front of House and Events
Apprentice

Ty Bonneville
Arthur Mathews
Patrick Wozny
Assistant House Managers

Erin Cleveland
Corinne Hastings
Jake Hoover
Daniel Howie
Peter Kattner
Michael Krystosek
Madi Lang-Ree
Judy Loyd
Keri Mack
Giuliana Marchese

Tab Mocherman
Raul Orozco
Gabrielle Owens
Maggie Perisho
Taylor Pittman
Ginny Reynolds
Lena Romano
Aaron Thiel
Chloe Ward
Carlo Zenner
Front of House Staff

GUEST SERVICES

Tim Maples
Guest Services Manager

Kyle Cornell
Desmond Gray
Guest Services Associates

Matthew Lightfoot
Tab Mocherman
Lewis Rawlinson
Maya Wallace
Brittani Yawn
Part-Time Guest Services Associates

AFFILIATED ARTISTS

Monty Cole
Nancy Garcia Loza
Alex Lubischer
Steve Pickering
Playwrights Unit

Sydney Chatman
Maggio Directing Fellow

CONSULTANTS & SPECIAL SERVICES

Plante & Moran PLLC
Auditors

M. Graham Coleman
Davis Wright Tremaine LLP
Legal Counsel

Richard L. Marcus/
Ogletree, Deakins, Nash,
Smoak & Stewart P.C.
Local Labor Counsel

Campbell & Company
Fundraising Consultants

Ellwood & Associates
Investment Consultants

Medical Program for
Performing Artists
Medical Consultants

Integrated Facility
Management
Consulting, LLC
Facility Management Consultants

The Kaleidoscope Group
Full Service Diversity &
Inclusion Partner

INTERNS

Allison Sparrow
Casting

Maddie Mueller
Development

Abby Wesley
Education

Eli Cohen
Jane Peña
Literary Management
and Dramaturgy

Maggie Collins
Marketing

Mia Guevara Morgan
PR/Publicity

Wren Dorris
Julie Jachym
Charlie Lovejoy
Adeline Snagel
Lucy Yahr
Stage Management

Leadership

Goodman Theatre Board of Trustees

Chair of the Board
David W. Fox Jr.*

*Chair Elect/
Vice Chair-Treasurer*
Jeff Hesse*

Vice Chairs
Doug Brown—
Assistant Treasurer*
Alice Young Sabl*
Kimbra Walter*
Patrick Wood-Prince*

President
Julie M. Danis*

Vice Presidents
Linda Coberly*
Richard Copans*
Marsha Cruzan*
Rebecca Ford*
Rodney L. Goldstein*
Carl Jenkins*
Joe Learner*
Elaine R. Leavenworth*
Anthony F. Maggiore*
Clare Metcalf*
Elizabeth A. Raymond*

Tod Saltzman*
Maria E. Wynne*
Secretary
Cynthia K. Scholl*
Immediate Past Chair
Joan E. Clifford*
Founding Chairman
Stanley M.
Freehling*
Honorary Chairman
Albert Ivar
Goodman*
Honorary Life Trustees
The Honorable Richard
M. Daley and Mrs.
Maggie Daley*
Past Chairmen
James E. Annable*
Deborah A. Bricker
Joan E. Clifford*
Lester N. Coney*
Patricia Cox*
Shawn M.
Donnelley

Civic Committee

Honorary Chairs
The Honorable Mayor
Lori Lightfoot
The Honorable
Governor JB
Pritzker

Members
Ellen Alberding
President, The Joyce
Foundation

James L. Alexander
Co-Trustee, The
Elizabeth Morse
Charitable Trust

Heather Y. Anichini
The Chicago Public
Education Fund

Melissa L. Bean
Chairman of the
Midwest, JPMorgan
Chase & Co.

Phillip Bahar
Executive Director,
Chicago Humanities
Festival

Mr. and Mrs. Norman
Bobins

Michelle T. Boone
Chief Program and
Civic Engagement
Officer, Navy Pier, Inc.

Kevin J. Brown
President & CEO,
Lettuce Entertain You
Enterprises, Inc.

Patrick J. Canning
Managing Partner,
Chicago Office,
KPMG LLP

Gregory C. Case
President & CEO,
Aon Corporation

Gloria Castillo
President,
Chicago United

Adela Cepeda
President,
A.C. Advisory, Inc.

John Challenger
CEO, Challenger,
Gray & Christmas

Frank Clark
President, Chicago
Board of Education

Lester and Renée
Crown
Crown Family
Philanthropies

Paula and James Crown
Crown Family
Philanthropies

Ambassador Ivo H.
Daalder and
Elisa D. Harris

The Honorable
Richard M. Daley
Chaz Ebert
Richard J. Edelman
President and CEO,
Edelman

Anthony Freud
General Director, Lyric
Opera of Chicago

Denise B. Gardner
Sarah Nava Garvey
Dr. Helene D. Galye
President and CEO,
The Chicago
Community Trust

Tracy K. Healy
Brian L. Heckler
Linda Hutson*
Sheldon Lavin
Paul Leinwand
Perry Mangione
Tony Markowski
Thomas P. Maurer*
Megan McCarthy
Hayes*
Catherine Mouly
Michael D. O'Halleran
Cara Burns Pan
Zoraida Sambolin
Roche Schuller*
Vincent A.F. Sergi
Chuck Smith
Genevieve Thiers
Steve Traxler
J. Randall White*
Susan J. Wislow
Troy Zimmerman
Neal S. Zucker*

Emeritus Trustees
Kathy L. Brock
Matthew Carter Jr.
Lamont Change
Philip B. Clement
Adnaan Hamid
Leslie S. Hindman
H. Michael Kurzman
Eva Losacco
Amalia Perea
Mahoney
Richard L. Pollay
Gigi Pritzker Pucker
Jill B. Smart
Carole David Stone
Linda B. Toops
Dia S. Weil
Eugene Zeffren

*Executive Committee
Member
*In Memoriam
Life Trustees in **bold**

As of December 2019

Richard S. Price
Chairman & CEO,
Mesirov Financial
Holdings, Inc

Madeleine Grynsztejn
Pritzker Director,
Museum of Contemporary
Art Chicago

Sandra P. Guthman
Chair, Polk Bros.
Foundation

Joan W. Harris
The Irving Harris
Foundation

Christie A. Hefner
Anne L. Kaplan
Mark Kelly
Commissioner, City of
Chicago, Department
of Cultural Affairs and
Special Events

Richard Lariviere
President and CEO,
The Field Museum

Samuel M. Menco
Co-CEO/Co-Founder
at Madison Dearborn
Partners LLC

Cheryl Mayberry and
Eric T. McKissack
Michael H. Moskow
Vice Chairman and Senior
Fellow of the Global
Economy, The Chicago
Council on Global Affairs

Michael G. O'Grady
Chair, Northern Trust
Corporation

Toni Preckwinkle
Cook County President

Michael Strautmanis
Vice President,
Civic Engagement,
The Barack Obama
Foundation

Jeanette Sublett and
Langdon Neal
Robert Sullivan
Regional President,
Fifth Third Bank

Lyndon A. Taylor
Managing Partner
(Chicago), Heidrick &
Struggles

Franco Tedeschi
Vice President (Chicago),
American Airlines

Elizabeth Thompson
Maria (Nena) Torres
and Matthew Piers
Mr. Carlos E. Tortolero
President, National
Museum of Mexican Art

Arthur Velasquez
Chairman, Azteca
Foods, Inc.

Laysha L. Ward
President, Community
Relations, Target
Corporation and
President, Target
Foundation

Benna B. Wilde
Program Director,
Arts and Culture,
Prince Charitable Trust

Donna F. Zarcone
President and CEO,
The Economics Club

As of December 2019

Leadership

Goodman Theatre Women's Board

Officers	<i>Gala</i>	Susan J. Wislow	<i>Non-Resident Member</i>	Mrs. Richard A. Samuels*
<i>President</i>	Diane Landgren	Linda Hutson	Jane K. Gardner	Orli Staley
Denise Stefan	Nina Owen	Carol Prins	<i>Sustaining Members</i>	Kathleen Fox
Ginascol	<i>Gala Silent Auction</i>	Sondra A. Healy		Dr. Mildred C. Harris
<i>1st Vice President</i>	Wendy Krimins	<i>Members</i>		Margie Janus
Fran Del Boca	<i>Membership</i>	Sharon Angell		Mary Ann Karris
<i>Treasurer</i>	Anne Van Wart	Anu Behari		Linda Krivkovich
Jill Javors	Sheila Harris	Darlene Bobb		Nancy Swan
<i>Secretary</i>	Alice Sabl	Julie Learner		<i>Honorary Members</i>
Andra Press	<i>Nominating</i>	Joan Lewis		Katherine A. Abelson
Committee Chairs	Cynthia K. Scholl	Kay Mabie		Christine Branstad
<i>Annual Appeal</i>	<i>Program</i>	Merle Reskin		Mrs. James B. Cloonan
Carole Wood	Jackie Robinson	Courtney Sherrer		Joan M. Coppleson*
<i>Education</i>	<i>Past Presidents</i>	Sara F. Szold		Ellen Gignilliat
Teri Brown	Cynthia K. Scholl	Renee Tyree		Sherry John*
Lorrayne Weiss	Swati Mehta	Heather Zimmerman		Gwendolyn Ritchie
	Joan E. Clifford			
	Alice Young Sabl			

Goodman Theatre Scenemakers Board

The Scenemakers Board is an auxiliary group comprised of diverse, young professionals who support the mission of the theater through fundraising, audience development and advocacy.

<i>President</i>	<i>Members</i>	Deanna Hope	Lee Mickus	Melissa Simpson
Megan McCarthy	Veronica S. Appleton	Deutschman	Mollie O'Brien	David Smith
Hayes	Jacqueline Avitia-Guzman	Kristin Johnson	Kristy G. Obuchowski	Stephanie D. Wagner
<i>Vice President</i>	Elizabeth Balthrop	Boswell	Wallen	Emily K. Watson
Craig McCaw	Tracy Clifford Esbrook	Meredith S. Kopelman	Eddie Patel	<i>*Past President</i>
<i>Treasurer</i>	Morgan Crouch	Justin A. Kulovsek*	Nick Peterson	
Dujon C. Smith	Cara Dehnert	Nicholas T. McIntyre	Desmond D. Pope	
<i>Secretary</i>	Huffman	Cheryl McPhillym*	Della D. Richards	
Brigitte R. Anderson	Kelli Garcia	Elise Melendez	Kristin Rylo	

Business Council

Co-Chairs	Douglas J. Brown,	Stephen P. D'Amore,	Jeff Hesse*	John J. Sabl,
David W. Fox, Jr.,	<i>Exelon Corporation*</i>	<i>Winston & Strawn</i>	Carl A. Jenkins,	<i>Sidley Austin, LLP</i>
<i>Northern Trust</i>	Bridget Burke,	Eva-Dina Delgado,	<i>BMO Harris Bank</i>	Andrea Schwartz,
<i>(ex officio)</i>	<i>Blue Cross Blue</i>	<i>Peoples Gas and</i>	Peter C. John, <i>Williams</i>	<i>Macy's</i>
Linda Coberly,	<i>Shield of Illinois</i>	Paul H. Dykstra,	Montgomery & John	Vincent A.F. Sergi,
<i>Winston & Strawn</i>	Kevin Joseph Burke,	<i>Ropes and Gray LLP</i>	Valerie King,	<i>Katten Muchin</i>
Anthony F. Maggiore,	<i>Hinshaw &</i>	<i>(Retired)</i>	Ariel Investments	<i>Rosenman LLP</i>
<i>JPMorgan Chase</i>	<i>Culbertson LLP</i>	Rebecca Ford,	Joe Learner,	Marsha Serlin,
Tod Saltzman,	Peter C.B. Bynoe,	<i>Scharf Banks Marmor*</i>	<i>Savills Studley*</i>	<i>United Scrap Metal, Inc</i>
<i>PepsiCo</i>	<i>Investments</i>	William F. Mahoney,	<i>Segal McCambridge</i>	<i>Corporation</i>
Maria Wynne,	Jennifer Campe,	<i>Singer & Mahoney, Ltd.</i>	Perry J. Mangione,	Genevieve Thiers,
<i>Leadership Greater</i>	<i>Wintrust Financial</i>	Rodney L. Goldstein,	<i>PNC</i>	<i>SitterCity.com</i>
<i>Chicago*</i>	<i>Corporation</i>	Partners	Harry J. Harczak, Jr.,	Steve Traxler,
Founding Chair	Matt Carter, <i>Aryaka</i>	Robert A. Clifford,	<i>Clifford Law Offices</i>	<i>Jam Theatricals, Ltd.</i>
Robert A. Wislow,	<i>CBRE US Equities</i>	Realty	Lester N. Coney,	Steven A. Weiss,
			<i>Mesirow Financial</i>	<i>Schofp & Weiss LLP</i>
			Richard Copans,	Neal S. Zucker,
			<i>Madison Dearborn</i>	<i>Corporate Cleaning</i>
			Partners	<i>Services</i>
			Tracy Healy, <i>CIBC</i>	<i>*Denotes member of the</i>
			Brian Heckler,	<i>Steering Committee.</i>
			<i>KPMG LLP</i>	

Leadership

Premiere Society Council

The Premiere Society Council develops a dynamic Premiere Society membership base and enhances the experience of its members by providing guidance, leadership and feedback on programming and events.

<i>Co-Chairs</i>	Kathleen Cowie	Fruman and Marian	Andra Press	Anne Van Wart
Alice Young Sabl	Rebecca Ford	Jacobson	Carol Prins	Lorrayne Weiss
Cynthia Scholl	Lynn Hauser	Claudia Katz	Jacquelyn Robinson	Graham Williams and
Susan Wislow	Mark Hudson and	Shannon and Gene	Ryan Ruskin and	Ryan Rivera
<i>Members</i>	Russell N. Johnson	Kinsella	Mike Andrews	Carole Wood and
Joyce Chelberg	Linda Hutson	Dietrich and Andrew	Michael Steinberg	Carl Jenkins
Joan E. Clifford	Segun Ishmael	Klevorn	and Salme Harju	
		Andrea Kott	Steinberg	

Theatre Forward Current Funders | List as of August, 2018

Theatre Forward advances the American theatre and its communities by providing funding and other resources to the country's leading nonprofit theatres. Theatre Forward and our theatres are most grateful to the following Educating Through Theatre funders:

(\$50,000-\$99,000)	(\$25,000-\$49,999)	(\$10,000-\$24,999)	(\$9,000 and below)	Daryl and Steven Roth
AT&T	The Augustine	The Music Man	EverGreene	Foundation
The Hearst Foundations	Foundation	Foundation	Architectural Arts	Westlake Reed
	Wells Fargo	Lisa Orberg	Alan & Jenni Freedman	Leskosky
		Southwest Airlines		tIncludes In-kind support

Spotlight Society Advisory Council

The Advisory Council is a group of estate planning professionals who aid the Goodman with its planned giving program. The Goodman is grateful to its members for the donation of their time and expertise.

Robert G. Gibson,	Beth A. Engel,	Charles Harris,	Thomas F. Karaba,	Sandra K. Newman,
<i>Council Chair,</i>	<i>Wells Fargo</i>	<i>Katten Muchin</i>	<i>Karaba Law</i>	<i>Perkins Coie</i>
<i>Cliffion Allen LLP</i>	<i>Private Bank</i>	<i>Rosenman LLP</i>	Rick Knoedler,	Lucy K. Park,
Christine L. Albright,	Barbara Grayson,	Louis S. Harrison,	<i>Northern Trust</i>	<i>Perkins Coie</i>
<i>Holland & Knight LLP</i>	<i>Jenner & Block</i>	<i>Harrison & Held, LLP</i>	Jean Langie, BMO	Terry L. Robbins,
Susan T. Bart,	Robert E. Hamilton,	Russell Johnson,	<i>Harris Bank, N.A.</i>	<i>Robbins & Associates</i>
<i>Schiff Hardin LLP</i>	<i>Hamilton Thies &</i>	<i>Northern Trust</i>	Kevin Lane,	LLC
Gwen G. Cohen,	<i>Lorch LLP</i>	Kim Kamin,	<i>Vedder Price PC</i>	Anita Tyson, <i>JPMorgan</i>
<i>Morgan Stanley</i>	David A. Handler,	<i>Gresham Partners, LLC</i>	Michael A. Levin,	<i>Private Bank</i>
	<i>Kirkland & Ellis LLP</i>		<i>BMO Harris Bank,</i>	
			<i>retired</i>	

Goodman Theatre Spotlight Society

We gratefully recognize the following people who have generously included Goodman Theatre in their wills or estate plans. For more information on the Spotlight Society call Marty Grochala at 312.443.3811 ext. 597.

Anonymous (4)	Julie M. Danis	Wayne and Margaret	Elizabeth I. McCann	Mr. and Mrs. Robert
Judy L. Allen	Shawn M. Donnelley	Janus	Karen and Larry	E. Shaw
Kristin L. Anderson-	Paul H. Dykstra	B. Joabson	McCracken	Michael Silverstein
Schwewe and Robert	Jonathn and Kristine	Jared Kaplan and	Nancy Lauter McDougal	Jill and Steve Smart
W. Schwewe	Garrett	Maridee Quanbeck	Kevin C. McGirr	Mary Soleiman
Susan and James	Harold and Diane	Claudia Katz	Lee S. Mickus	Elaine Soter
Annable	Gershowitz	Mel and Marsha Katz	John and Dawn Palmer	Hal S. R. Stewart
Andrea Atlass	Robert G. Gibson	Rachel E. Kraft	Elizabeth Anne Peters	Carole David Stone
Susan T. Bart	Ellen and Paul Gignilliat	H. Michael and	Karen and Dick Pigott	Judith Sugarman
Julie and Roger Baskes	Denise Stefan Ginascol	Sheila Kurzman	Peter and Susan Piper	Marlene A. Van Skike
Joan I. Berger	Michael Goldberger	Anne E. Kutak	Susan Powers	Gloria Walton
Drs. Ernest and	June Golin	Fred and Corinne Lane	Carol Prins	Lorrayne and Steven
Vanice Billups	Albert I. Goodman	Richard and Christine	Elizabeth A. Raymond	Weiss
Norma Borcharding	Mary L. Gray	Lieberman	Merle Reskin	Dia S. Weil
Deborah A. Bricker	Marcy and Harry	Dr. Paul M. Lisnek	Peter Rogowski and	Randy and Lisa White
Joe and Palma	Harczak	Ralph and Terrie	Ellen Melnick	Graham Williams and
Calabrese	Barbara A. Harris	Mannel	Angelique A. Sallas, PhD	Ryan Rivera
Robert and Joan Clifford	Sondra and Denis Healy	Dorlisa Martin and	Natalie Saltiel	Maria E. Wynne
Lester N. Coney	Vicki and Bill Hood	David Good	Roche Schuller	James G. Young
Patricia Cox	Linda Hutson	Meg and Peter Mason	Beth and Steven	
Terry J. Crawford		Tom and Linda Maurer	Schulwolf	

The Goodman holds dear the memory of the following individuals who have honored the work on our stages with a bequest.

Anonymous (1)	Bettie Dwinell	Patricia D. Kaplan	Helen J. Petersen	Rose L. Shure and
Hope A. Abelson	Joan and Stanley M.	Theodore Kassel	Neil Pomerrenke	Sidney N. Shure
Alba Biagini Trust	Freehling	Anne M. Kelly	Carol Ann Poremba	George Northup
George W.	Florence Gambino	Charles A. Kolb	Connie Purdum	Simpson, Jr.
Blossom III	Al Golin	Jeffrey Korman	Charlene Raimondi	Thomas R.
Camilla F. Boitel Trust	Bernard Gordon Trust	Nancy S. Lipsky	Alice B. Rapoport	and Charlene
Bernard J. Dowling	Marjorie S. Goodman	Kris Martin	Muriel Reder	Landsberg Smith
Marcia S. Cohn	Alfred L. McDougal	Graff	Glady's L. Ripley	Vlada Sunders
Estate of Marjorie	Richard Gray	Eric Nordholm	Verla J. Rowan	Lenore Swoskin
Douglas	Evolynd A. Hardinge	James F. Oates		

support

Honor and Memorial Gifts

Honor gifts provide an opportunity to celebrate milestones such as anniversaries, birthdays, graduations or weddings. Memorial gifts honor the memory of a friend or loved one. Due to space limitations we are unable to include gifts of less than \$100. Below are the commemorative gifts made between January 2019 and January 2020.

In Honor of Kristin Anderson-Schewe
David R. Conrad
Gordon and Thea Ide

In Honor of Debbie Bricker
Stephen and Lauren Scheibe

In Honor of Julie Danis
Gary and Debbie Holzman
Gary and Modena Wilson
Carlotta Romano Grossman
Tom Karaba and Marsha Hoover

In Honor of Augustus Gaylord Donnelley
Julie M. Danis and Paul F. Donahue

In Honor of Shawn Donnelley
Julie Baskes
Maria Bechly
Sondra Berman Estein
Ruth Ann Gillis
Rachel Kraft and Doug Brown
Marchese Family
Carol Prins

In Honor of Shari Eklof
Judy and Stephen Levin

In Honor of Robert Falls' theatrical vision and the talented organization that fulfills that vision
Stephen and Susan Bass Marcus

In Honor of Ruth Ann Gillis and Michael McGuinnis
Lisbeth Stiffel

In Honor of Dixon Kaufman, M.D.
Kristin Anderson-Schewe and Bob Schewe

In Honor of Anne M. Kelly
Theresa Kelly

In Honor of Gail Koster
Larry and Deborah Levinson

In Honor of Thomas and Janet Leopold
Nancie Entenmann

In Honor of Elaine Leavenworth
Suzanne Lebold

In Honor of Alice Maguire and David Naunton
David B. and May T. Skinner

In Honor of Carol Prins
Susan and Phil Marineau

In Honor of Lilian and Richard Schuller
Gretchen Schuller

In Honor of Roche Schuller
Keri and Phillip Bahar

In Honor of Courtney Sherrer
Maxine and Jack Zarrow Family
Foundation

In Honor of the Sichlau Family
Renee Sichlau

In Honor of Lorraine Weiss
Mr. and Mrs. Thomas Altholtz

In Memory of Bette Abraham
Patti Acurio

In Memory of Bruce Chelberg
Linda Hutson

In Memory of Elizabeth Elser Doolittle
Mr. and Mrs. Peter Coburn

In Memory of Robert Graff
Kristin Anderson-Schewe and Bob Schewe

In Memory of Sarah Goldberg
Sandra Balu

In Memory of Lois "LoLo" Hauselman
Marty Hauselman

In Memory of Flower Jenkins Jr.
Kristin Anderson-Schewe and Bob Schewe

In Memory of Stan Freehling
Kristin Anderson-Schewe and Bob Schewe

Charles Gardner and Patti Exlar
Judy and Scott McCue
Carol Prins and John Hart
Lisa and Randy White

In Memory of Ralph Johnson/ Phillip East
Mary Kaess
Holger and Erin Sprute

In Memory of Fran Liner Kupferman
Carol and David Liner

In Memory of Thomas R. and Charlene Landsberg
Blooma and Lenoard Stark

In Memory of Michael Maggio
The Maggio Family
Leigh and Henry Bienen

In Memory of Alexander Rettinger
The Rettinger Family

In Memory of Al Rose
Mimi Rose

In Memory of Michael Sachs
Leslie and Jimmy John Liautaud

In Memory of Susan G. Seigle
Harry J. Seigle

In Memory of Beverly Traxler
Kristin Anderson-Schewe and Bob Schewe

In Memory of the Honorable Stephen R. Yates
Debra Yates

In Memory of Abby S. Magdoritiz-Wasserman
Dr. David Wasserman

support

Institutional Support | Corporate, Foundation and Government Donors

Goodman Theatre is grateful to all of its institutional donors for their generous support between January 2019 and January 2020. Listed below are contributors at or above the \$1,000 level.

Ovation Society (\$200,000 and above)

Ruth D. and Ken M. Davee
New Works Fund*
The Rhoades Foundation
The Shubert Foundation
The Wallace Foundation*

Producer's Circle (\$100,000 - \$199,999)

American Airlines*
Paul M. Angell Family
Foundation*
The Joyce Foundation*
The John D. and Catherine
T. MacArthur Foundation*
Northern Trust
Polk Bros. Foundation*

Director's Circle (\$50,000 - \$99,999)

Abbott/Abbott Fund
Edith-Marie Appleton
Foundation
Bank of America
BMO Harris Bank
Chicago Tribune
The Crown Family*
Exelon/ComEd
Fifth Third Bank
Julius N. Frankel
Foundation
Illinois Arts Council Agency
ITW
JPMorgan Chase
James and Madeleine
McMullan Family
Foundation

In-Kind Donations

Premiere Circle (\$20,000 - \$200,000)

Sondra and Denis Healy
Hoy
Petterino's
Tiffany & Co.
WBZE 91.5 FM

Dress Circle (\$10,000-\$19,999)

Sharon and Charles Angell
Behind the Scenes
Catering & Events
Joan and Robert Clifford
Swati and Siddharth Mehta

KPMG LLP
Elizabeth Morse Charitable
Trust
National Endowment for
the Arts
PepsiCo
PNC Bank
Pritzker Pucker Family*
Foundation
Harold and Mimi Steinberg
Charitable Trust*

Premiere Circle (\$30,000 - \$49,999)

Allstate Insurance Company
Chicago Community Trust
The Elizabeth F. Cheney
Foundation
Conagra Brands
Foundation

The Walt Disney Company*
Walter E. Heller Foundation
Katten Muchin Rosenman
LLP
Macy's
Mayer Brown LLP
McDonald's Corporation
Prince Charitable Trusts
PwC LLP
Russell Reynolds
Associates
The Virginia B. Toulmin
Foundation
U.S. Bank Foundation
Winston & Strawn LLP

Patrons (\$5,000-\$9,999)

Frontera Grill
FTD Companies, Inc.
Kobrand Wine & Spirits
Interactive Health Inc.
Mesirow Financial
The Peninsula New York
Rosen Hotels & Resorts, Inc.

Distinguished Guarantors (up to \$4,999)

Coco Pazzo
Eddie V's Prime Seafood
Elements, Chicago
Everest

Dress Circle (\$20,000 - \$29,999)

Aon
Chicago Department
of Cultural Affairs and
Special Events
CIBC
The Glasser and Rosenthal
Family
John R. Halligan Charitable
Fund
Efroymson Family Fund
The William Randolph
Hearst Foundations*
Laurents/Hatcher
Foundation
Mayer-Rothschild
Foundation
Peoples Gas and
North Shore Gas

Patrons (\$15,000 - \$19,999)

The Buchanan Family
Foundation
Neiman Marcus Michigan
Avenue
Wintrust Financial

Distinguished Guarantors (\$10,000 - \$14,999)

Alliant/Mesirow Insurance
Services
Anonymous*
Aryaka
Blue Cross Blue Shield
of Illinois
Clerestory Consulting LLC

The Irving Harris
Foundation
Kirkland & Ellis LLP
The Siragusa Family
Foundation*
United Scrap Metal, Inc.
William Blair & Company

Guarantors (\$5,000 - \$9,999)

Conant Family Foundation
Goldman Sachs & Co.
Ogletree Deakins
Dr. Scholl Foundation
Theatre Forward

Principals (\$2,500 - \$4,999)

Robert W. Baird & Co.
Incorporated
Theatre Communications
Group, Inc.

Sustainers (\$1,000 - \$2,499)

Eaton Vance Management
Gemini Graphics
Lloyd A. Fry Foundation
Sahara Enterprises, Inc.
Suburban Mailing
Services, Inc.
Vision Integrated Graphics

*Multi-year support

Individual Premiere Society Members And Major Donors

The Premiere Society is a group of donors that provide the core support for outstanding productions and award-winning education programs that reflect and enrich Chicago's diverse cultural community. Membership in the Goodman Premiere Society is extended to individuals and couples who make an annual gift of \$2,500 or more. The list below reflects gifts received January 1, 2019 – January 1, 2020.

Ovation Society (\$100,000 and above)

Julie and Roger Baskes
Joan and Robert Clifford
David and Alexandra Fox
Nancy Lauter McDougal
Carol Prins and John Hart
The Michael A. Sachs
Family Foundation
Kimbra and Mark Walter

Director's Circle (\$50,000 – \$99,999)

Susan and James Annable
The David Q. and Mary A.
Bell Foundation
Joyce Chelberg
Julie M. Danis and Paul F.
Donahue
Denise and John Ginascol
Albert and Maria Goodman
The James and Madeleine
McMullan Family
Foundation
Swati and Siddharth Mehta
Alice and John Sabl
Cynthia and Michael Scholl

Leadership Circle (\$25,000 – \$49,999)

Anonymous
Sharon and Charles Angell
Adam and Abbe Aron
Mr. and Mrs. James Bay
Doug and Teri Brown
Bob and Loretta Cooney
Kathleen and James Cowie
Patricia Cox
Drs. Robert and Frances
Del Boca
Shawn M. Donnelley and
Christopher M. Kelly
Paul Dykstra and Spark
Cremien
Ruth Ann M. Gillis and
Michael J. McGuinnis
Marcy and Harry Harczak
Jeffrey W. Hesse and Julie
Conboy Hesse
Patricia L. Hyde/Komarek-
Hyde-Soskin Foundation
Fruman and Marian
Jacobson
Diane Landgren
Leslie and Jimmy John
Liautaud, In memory of
Michael Sachs*
Mr. and Mrs. Thomas P.
Maurer

Catherine Mouly and LeRoy
T. Carlson, Jr.
Andra and Irwin Press
Elizabeth Raymond and
Paul Hybel
Harry J. Seigle, in memory
of Susan G. Seigle*
Shaw Family Supporting
Organization
Susan and Bob Wislow

Premiere Circle (\$15,000 – \$24,999)

Deborah A. Bricker
Cecilia Conrad and
Llewellyn Miller
Richard and Vanessa
Copans
Sondra and Denis Healy/
Turtle Wax, Inc.
The Estate of Anne M. Kelly*
Robert and Cheryl Kopecky
Julie and Joe Learner
Elaine R. Leavenworth
Anthony and Julianne
Maggiore
Donald L. Martin II
Mr. and Mrs. Samuel
Mencoff
Linda and Dennis Myers
Gigi Owens
Ori and Bill Staley
Nancy and Kevin Swan
Sara F. Szold
Renee L. Tyree
Lorraine and Steve Weiss
Randy and Lisa White
Patrick and Meredith
Wood-Prince
Ronald and Geri Yonover
Foundation

Dress Circle (\$10,000 – \$14,999)

Anonymous (2)
Kristin Anderson-Schewe
and Robert Schewe
Maria C. Bechily and Scott
Hodes
Anjan Asthana and Anu
Behari
Michael Belsley and Nina
Owen
Ms. Jean Bramlette
Richard and Ann Carr
Melissa Skoog and Chris
Dunagan
Feitler Family Fund of Illinois
Mike and Dave Fox

Mr. and Mrs. Rodney L.
Goldstein
Sheila Harris and Wallace
Harris, Jr.
David D. Hiller
Leslie S. Hindman
Linda Hutson
Jill and Jay Javors
Sherry and Peter John
Dietrich and Andrew
Klevorn
In Memory of Thomas R.
and Charlene Landsberg
Smith*
Joan and Rik Lewis
Michael and Debra Liccar
Jim and Kay Mabie
Amalia and William
Mahoney
Michael and Kay O'Halleran
Pritzker Traubert Family
Foundation
Jacquelyn Robinson
Patrick and Shirley Ann
Ryan
Mr. Brady I. Twiggs
Anne Van Wart and Michael
Keable
Neal S. Zucker

Distinguished Guarantors (\$5,000 – \$9,999)

Anonymous (5)
Andy Atlas and Ken
Kuehnle*
John and Caroline
Ballantine
Dr. Gilbert W. Bowen
Jamie and Michael Boler
Christine and Paul Branstad
Kathy L. Brock
The Bromley Family
Douglas R. Brown and
Rachel E. Kraft
Tom and Dianne Campbell
Philip B. Clement and Mary
Ann Everlove Clement
Linda Coberly
Carol and Douglas Cohen
Kevin J. Conway
Marsha Cruzan and Tom
McGinnis
Judy and Tapas K. Das
Gupta
Kevin and Kathy Durkin
Scott and Lenore Enloe
Carol W. Evans
Sally and Michael Feder
Christine Finzer

Rebecca Ford and Don
Terry
Denise Michelle Gamble/
In Memory of Dorothy and
Lillian Morton
Kristen B. Garcia
Meredith George
Mrs. June Golin
Drs. Tom and Doris Graber*
Richard* and Mary L. Gray
Brenda and James Grusecki
Beverly S. Guin
Marie L. Gunn
Mary Kay and Edward
Haben
Katherine Harris
Lynn Hauser and Neil Ross
Brian L. Heckler and Coley
M. Gallagher
Ted and Dawn Helwig
Beth Hogan-Chan and
Louis Chan
Eugene Holland
Mr. William Ibe
Dr. and Mrs. Segun Ishmael
Melinda Jacobson
Russell N. Johnson and
Mark D. Hudson
Nicholas* and Mary Ann
Karris
Ronald and Bonnie Kas
Jean A. Klingenstein
Robert Kohl and Clark
Pellett
Chuck and Cindy Kreisli
Linda and Peter Krivkovich
Sheila and Mike Kurzman
Scott and Bobbi Lebin
James and Pamela Learner
Yung Lim and Peggy Lim
Dr. Paul M. Lisnek
Ms. Eva T. Losacco
Susan Manilow
Alex Moreno
Suzu and David Neithercut
Katherine and Norm* Olson
Ms. Abby O'Neil and Mr.
Carroll Joynes
Bruce and Younghee Ottley
Mr. and Mrs. Richard L.
Pollay
The Daniel and Genevieve
Ratner Foundation
Merle Reskin
Dave Rice Consulting
Anthony N. Rivello
Rhonda Rochambeau
Deb Sante
Roche Schulfer and Mary

Beth Fisher
Beth and Steven Schulwolf
Dr. Elizabeth Sengupta
Mr. and Mrs. Vincent A.F.
Sergi
Jill and Steve Smart
Steve and Kathleen Smith
Mr. and Mrs. Douglas
Steffen
Michael Steinberg and
Salme Harju Steinberg
Liz Stiffel
Carole David Stone
Judith Sugarman
Scott and Rhonda Swanson
Ms. Pamela Tilbrook
Tom and Jeannie Tisbo
Ms. Gloria A. Walton
Dia S. and Edward S.
Weil, Jr.
Graham Williams and Ryan
Rivera
Sallyan Windt
Maria E. Wynne

Guarantors (\$2,500 – \$4,999)

Anonymous (2)
Nancy Ali and Kulbir Thukral
Andy and Sue Arnold
Edgar H. Bachrach
Christine and John Bakalar
Mr. Gustavo Bamberger
C. Barbera-Brelle
Walter Bay
Ken Belcher and Sandra
Ihm
Robert A. and Marla Kim
Benziger
Jonathan, Jan, and Mera
Berger
Robert Bernacchi
Dr. Lisa Betts
Faye E. Blake
Mr. and Mrs. Andrew K.
Block
Tom and Marilyn Bloom
Steve and Lynn Bolanowski
Jan Brengel
Robert and Joell Brightfelt
Mitch Bramstaedt and Paul
Garbarczyk
Dean L. and Rosemarie
Buntrock Foundation
Phil Burgess and Jim Nutter
Carol and Tom Butler
Peter Calibraro and Mike
O'Brien
Allison Calisoff
Robert and Geneva
Calloway
Ray Capitanini
Catherine Cappuzzello and
David Paul
Lamont and Paulette
Change
Ms. Michele Chinsky

Julie Cisek and Harry L.
Jones
Edythe & James Cloonan
Loren Renee Reynolds and
Joyce R. Cohen
Alexandra and Bill Cole
Collens Family Fund
In Memory of Dr. W. Gene
Corley* by Lynd Corley
Paul R. Cox
Phyllis Cretors
R. Bert Crossland
Gordon and Melissa Davis
Bruce and Linda DeViller
Gayle and Dan Devin
Ms. Roberta S. Dillon
Leonard and Patricia
Dominguez
In Loving Memory of
Barbara L. Downing*
David Dziedzic
Stephen and Dorne
Eastwood
Steve and Julie Ehrlich
Jan Elfine
Dr. Sitaramesh and Mrs.
Melissa Emani
Charles and Carol Emmons
Encova Insurance (formerly
BrickStreet)
Sondra Berman Epstein
Susan Page Estes and
Andrew Rojecki
Anthony and Kathleen Filer
Mr. and Mrs. Peter D.
Fischer
Mr. Donnie Fitzgerrald
Jim and Yvonne Fogerty
Kathleen S. Fox
Jennifer Friedes and Steven
Florsheim
Kate Friedlob
Friedman Properties Ltd.
Robert and Kathleen Frye
The Georgantas Family
Ellen and Paul Gignilliat
James J. and Louise R.
Glasser Fund
Ethel and Bill Gofen
Nancy and Gordon
Goodman
Chester Gougis and Shelley
Ochab
Heather M. Grove
Mary Hafertepe
Bruce and Jamie Hague
Joan M. Hall
Drs. Mildred and Herbert
Harris
Dr. Robert A. Harris
Dorothy G. Harza
Lois and Marty Hauselman
Holly Hayes and Carl W.
Stern
Kimberlee S. Herold
Donald L. Hoffman
Vicki and Bill Hood

Kathy and Joe Horvath
Caroline and Charlie
Huebner
Monica and William
Hughson
Wayne and Margie Janus
Ronald Bert Johnson
Jared Kaplan and Marilee
Quanbeck
Loretta and Allan Kaplan
Dr. Claudia A. Katz
Mark and Pam Kendall
Cathy and William
Kenworthy
Omar, Ashraf, Hani Khalil
in Memory of Hoda
Aboleneen*
Hunter and Susan Kingsley
Shannon and Gene Kinsella
Tom Klarquist and Steve
Somora
Randall and Daman
Kowalski
Ms. Jean Kraika
Therese Krieger
Wendy Krimsin
Drs. Vinay and Raminder
Kumar
Carol L. Kutak and Rebecca
Gould
Mr. Henry Latimer
Richard and Debra Learner
Wesley, Katherine, Anthony,
Valerie, Anna Belle & Daniel
Lee
Judy and Stephen Levin
Mark Levine and Andrea
Kott
Holly and Matt Maloney
Ralph and Terrie Mannel
Sarah and Adam Markman
Jill and Anthony Markowski
Donald and Maureen*
Maves
Ann Mayo
Scott and Susan McBride
Megan A. McCarthy Hayes
John and Etta McKenna
Jane and William McMillan,
Ph.D.
Pamela G. Meyer
Sidney G. Miller, Jr. and
Sabrina L. Miller
Julie and Scott Moller
John and Mary Muehlstein
Joe and Pat Murphy
Paulette Myrie-Hodge
Avis Lee Mandel Neiman
Lee and Sharon Oberlander
Cathy and Bill Osborn
Roxanne and Chuck
Osborne
Linda and Jaxon Oshita
Craig and Elizabeth Owens
John and Dawn Palmer
Ms. Marianne J. Parrillo
Desmond D. Pope

Diana and Bruce Rauner
Mr. Neal and Dr. Jennifer
Reenan
The Rettinger Family in
Memory of Alexander
Rettinger
Alicia Reyes
Monique and Pete Rub
Ryan Ruskin and Mike
Andrews
Tod and Trish Saltzman
Salvatore's Chicago
A. Sue Samuels
Richard and Ellen Sandor
Family Foundation
Linda and Mitchell Saranow
Howard* and Gail Schaffner
Steven and Lauren Scheibe
Richard and Cynthia
Schilsky
Kenneth D. Schmidt, M.D.
John Schneider
Mark Schulte and Mary
Holcomb
Allen Schwartz
Courtney Sherrer
Mary Soleiman
Marge and Larry Sondler
Neil and Eliza Stern
Ms. Ann B. Stevens
Hal S. R. Stewart
Scott and Rhonda Swanson
Anthony Taglia
Lissa Thomas and Stephen
Pratt
Mr.* and Mrs. Philip L.
Thomas
Mr. and Mrs. Richard L.
Thomas
Tim and Jennifer Tomasik
Veljko Trkuja
Susan and Bob Underwood
Mary Warchol
Dr. David Wasserman –
in Memory of Abby S.
Magdovitz-Wasserman*
Ms. Vanessa J. Weathersby
Dr. and Mrs. William Werner
Dr. Norma E. Davis Willis
Carole Wood and Carl
Jenkins
Sandy Worley and Marc
Walfish
Gene and Tita Zeffren
Judy and Paul Zelisko
Troy and Heather
Zimmerman

Mr.* and Mrs. Philip L.
Thomas
Mr. and Mrs. Richard L.
Thomas
Tim and Jennifer Tomasik
Veljko Trkuja
Susan and Bob Underwood
Mary Warchol
Dr. David Wasserman –
in Memory of Abby S.
Magdovitz-Wasserman*
Ms. Vanessa J. Weathersby
Dr. and Mrs. William Werner
Dr. Norma E. Davis Willis
Carole Wood and Carl
Jenkins
Sandy Worley and Marc
Walfish
Gene and Tita Zeffren
Judy and Paul Zelisko
Troy and Heather
Zimmerman

Celebrity (\$1,000 – \$2,499)

Anonymous (7)
Dave Abrams and Cynthia
Bemis Abrams
Academic Approach
Judy L. Allen
Mr. and Mrs. Thomas Altholz
Mr. Robert Anderson

support

Barbara Ballew
Elizabeth Balthrop
William Bartley
Sandra Bass
Paul and Sylvia Bateman
Robert Becker
Leigh and Henry Bienen
Dr. Dionne and Mr. Jeffrey Blackman
Frances Blair
Laura and Rich Blessen
Philip D. Block III* and Judith S. Block
Mr. John Blosser
Thomas Bookey
Kristin Johnson Boswell
Brainard Nielsen Marketing
Lin Brehmer and Sara Farr
James D. and Judith L. Brenner
Rick Brickwell
Sally and Reid Brody
Mark and Jami Bronson
In Honor of Julia White Bundy
Shelly Burke
Cara Burns Pan and Warren Pan
C&K Trucking, L.L.C.
Catherine Campise
Mr. Randolph Cano
Mark Cappello
Walter C. Carlson
Julius Carter
Lori and Jerome Cataldo
Betty Lo Cleeland
Tracy Clifford
Mr. and Mrs. Peter Coburn
Sarah Cohn
Kay Collier
Howard R. Conant, Jr.
Nancy R. Corral
Lawrence O. Corry
Kelly T. Cotton
Jeff and Leslie Cox
Bob Cratchit
Morgan Crouch
C. Cwiok
Bridget Daley
Ariane Dewey Dannasch
Anne and Scott Davis
Carrie and James Davis
Deanna Deutschman
Suzette Graff Dewey
Marilyn Drury Katillo
Gail Elden
Encompass Meetings
Brenda Eriksen
Ron and Judy Eshleman
Katherine G. File and Daughters
Fred and Sonja Fischer
Joan Flashner
Mike Fleming
Mr. Marvin E. Fletcher
Lewis Flint
Michael and Jean Franke

Jerry Freedman and Elizabeth Sacks
Kitty and Lee Freidheim
Bobby Friedman
Dr. Susan Fuchs
Abby Funk
Don Funk
Kelli Garcia
Charles Gardner and Patti Eylar
Susan and Scott Garrett
Elizabeth C. Gisch
Margaret A. Gisch
Paula A. Golden
Megan E. Goldish and Matthew Jay
Kirsten Goodman
Mamie Gray
Craig and Debbi Griffith
Samuel and Melissa Hamood
Melissa Harris
Tracy Healy and Gregory Beard
The Michael and Mona Heath Fund at the Chicago Community Foundation
Keith and Jodi Hebeisen
The Hickey Family Foundation
Paul and Barbie Hills
James and Margot Hinchliff
Janet and Richard Horwood
Tex and Susan Hull
Marina Jacks
Jay Janese Nancy and Paige Jeffrey
Janet Johnson and Randy Gunn
Nancy and Carl Johnson
Scott Johnson
Ms. Aisha M. Jones
Dolores Kadow
Polly B. Kawalek
The John and Bette Kayse Family
Dr. J G Kingsley
James A. Kochalka
Koldyke Family Fund
The Kotiw Family
Justin Kulovsek
Patrick R. Lagges
Maria and Stephen Lans
Tom and Anne Lysaught
Barbara MacDowall and Robert Hanlon
Dave and Kris Mahon
Meredith Mann
Stephen and Susan Bass Marcus
Maryhelen A. Matijevic
Scott and Judith McCue
Peggy McGrath and Howard Goldstein
Rebecca Michaels
Lee Mickus
Mr. and Mrs. Harold J. Moe

Joy Hammer and Jim Morton
Laura Nelson
Mollie E. O'Brien
Kristy G. Obuchowski
Wallen
Loretta O'Donnell
Barbara and Daniel O'Keefe
Bonnie McGrath and Bruce Oltman
Dan O'Neill
Eddie Patel
Mr. and Mrs. Glenn Pawlak
Gregory and Mary Pearlman
Terry and Cindy Peigh
Robin Perlen
Michael and Sandra Perlow
John Pfeiffer
Mr. Daniel Polsby
Andrew and Judy L. Porte
Arch Pounian
Karl and Tiffany Prince
Mr. and Mrs. Albert Pritchett
William and Gail Radzevich
Renate Reichs and Tom Schneider
Mr. Alan Rottman
Angelique A. Sallas, Ph.D.
Glen Saltzberg and Jordana Joseph
Bettylu and Paul Saltzman
Barbara and Richard Samuels
Sargent Family Foundation
Jill Schmidt
Barbara and Gerald Schultz
Karen Seamen and Chris Schenk
David and Judith Sensibar
Drora G. and Matti N. Shalev
Renee and Michael Sichlau
Dr. and Mrs. Kenneth I. Siegel
Mark E. Soczek
Dr. Stuart P. Sondheimer and Bonnie Lucas
George A. Speck
Kathy and Scott Stanton
J B Starshak
Fredric and Nikki Will Stein
Sylvia and Joe Stone
Pam and Russ Strobel
Norm and Lynda Strom
Catherine and John Sugrue
Glenn and Myretta Taylor
Michael and Elizabeth Tenteris
Ms. Jeanne Rochelle Towns
Jay Tunney
Dr. Michael and Kathleen Uzelac
Stephanie Wagner and Ian Smithdahl
Patrick and Julia Walter
H. Randolph and Nancy Williams
Craig and Melissa Wilson

Ann Wise
Roycealee J. Wood
Edward J. Zarach
Star (\$500 - \$999)
Wallen
Anonymous (22)
Katherine A. Abelson and Robert J. Cornell
Thomas and Susan Adam
Mr. Andrew Agnew
Alejandro M. Aixala
Hubert Allen and Hau Chyi
Ms. Roberta Allen
Ms. Susan C. Alm
Mary Alukos
Amal Amin
Brigitte R. Anderson
Judith Anderson
Veronica S. Appleton
Drs. Iris and Andrew Aronson
Peter and Lucy Ascoli
Duncan and Denise Ashurst
Earle and Kara Atwater
Bernice Auslander
Bill and Linda Aylesworth
Donald Ayres
Richard and Janice Bail
John and Sharon Baldwin
Ms. Enid Baron
Allison and Daniel Baskes
Ronald Bauer and Michael Spencer
William Baumgardt
Nancy G. Becker
Robert Becker
Brian and Kathleen Beggerow
Angela Bell
Dr. Janet Belsky and Sheldon Gertzfeld
Carl and Catherine Bergetz
Emily Bergstrom
Leonard and Phyllis Berlin
Jamie Berndt
Loren and Esther Berry
Lina Bertuzis
Jennifer Birmingham
Nathaniel Blackman III
Richard L. Bordelon
Susan Bowey
Ms. Vicki M. Boyce
Henri Boylan
Robert Bradbury
Michael and Kate Bradie
Robin Brand
Julia Brenner
Joseph and Giovanna Breu
Corinne E. Brophy
Jonathan and Sophie Bross
Rebecca Burch and Edward Craig
Kristin L. Buss
Greg Cameron
Erin Campbell
Susan Campbell
Jennifer Campe

support

Charles Carlson
Patrice E. Carlson
Dr. Rosalind Cartwright
Evelyn Cedeno
Susan L. Chomicz
Nancy Clark
Kristol Clayville and Emanuelle Burton
Carol Cleave
Ms. Jeanne Cleveland
Tamar Climan
Elaine Collina
Frank P. Conway
Nadine Coulson
Erica Creen
Keith Crow and Elizabeth Parker
Jeanne M Crowe
Maureen and George Crowley
Ms. Pamela Crutchfield
Mary Kate and Bob Cullen
The Cunningham Family
Vicki Curtis and William Siavelis
Isabeau Dasho
John and Bonnie Dauer
Nancy Dehmow
Ms. Adele Deprizio
Ingrid H. Deroubaix
David and Marie Dickson
Difference: Building Better Brands
Dionne Victoria Studios Inc.
Robert and Carol Dobis
Deirdre Drake
Brian and Kathleen Stuart Dyer
Joan and John Dysart
Robert Edger M.D.
George* and Sue Emmerick
Tawana Epps
Mary and Bruce Feay
The Flahaven Family
Bill Fletcher and Don Moss
James E. Flinn
Mrs. Adrienne Foley
Bernadette Foley and Richard Landgraaff
Mr. Francis Fons
Lisa Foster
Fred Frankel
Ann Franzosed
John and Carol Freidheim
Tom and Marcia Fritz
Alexis Funches
Jane K. Gardner
John and Sarah Garvey
Barbara and Chuck Gately
Joann Gawczynski
Lisa Genesen
Erik Gensler
Patricia V. Gentry
Brent and Katie Gledhill
Don and Marchelle Goens
Ophelia E. Goodrum

Mr. and Mrs. William M. Goodyear, Jr.
Mary M. Goosby
David and Diane Graf
Barbara Grauer
Mamie Gray
Burt and Patricia Greenberg
Susan Griffin
Dr. Alan Grigg and Dr. Michael Flores
Jacquelyne Grimshaw
Ms. Thomasine L. Gronkowski
Carla and Jim Grossman
Paul Gruber
Maxine Fanberg Guenthner
and Tom M. Guenthner
Lucia Guri
Kathleen Hagerty
Barbara and Robert Hall
Beatrice Hall
Mary Hallman
Melanie and Robert Halvorson
Jo Ellen and Stephen Ham
Ted Hammel
Charles R. Hammerslough
Sarah and Joel L. Handelman
The Hanes Huske Family
Judy Hanzel
Alex Harris
Kenneth and Patricia Harthun
Craig Hartman
Samir Hasso
Steve Hastalis
Eloise Haverland
Hazel
Raynelle F. Heidrick
Mr. Ben Heilman
Josephine E. Heindel
Mary Ellen Hennessy
Mr. and Mrs. David Henry
Dr. Nicola Hill-Cordell
Emlee Hilliard-Smith
Mary P. Hines
Robin Hladky-Fox
Hodge Family Fund of the DuPage Foundation
Shelva Hogan-Echols
Robert and Kimberly Hogan
Ms. Amy Holtsford
Gary and Debbie Holzman
Michele J. Hooper and Lemuel Seabrook III
Dr. Jeronna Hopkins
Georgia Hudson
Mr. and Mrs. Gordon Ide
Mr. Alexander Igochnikov
Rev. Darrick Jackson
Nicole A. Jackson
Alan and Kathy Anderson Janice
Daniel Jares
Charles Jenrich

Carol B. Johnson
Pat and Joni Johnson
Wendy Kabaker
Mrs. Lois A. Kadai
Tom Karaba and Marsha Hoover
Sree Kartha
Aviva Katzman and Morris Mauer
Jennifer Keller
Dr. and Mrs. William Kelley
Jerry and Anna Marie Kelly
Theresa Kelly In honor of Anne M. Kelly
Denise Kennedy
Mr. and Mrs. William K. Ketchum
Scott and Irene King
Ms. Sheila King
Thomas C. and Constance Kitzinger
Ruth Kleinfeldt
Susan Klingenstein Fund
Kolnicki, Peterson, and Wirth, LLC: Certified public accountants, tax preparers, and financial advisors
Sheila and Richard Komarek
Meredith Kopelman
John and Celeste Kralovec
Vivian and Loren Kramer
Seth Krantz and Stephanie Linn
Mr. and Mrs. Larry Krucoff
Gaby Kuhn and Chuck Marien
Ms. Michele Kurlander
Mr. Gabriel A. Labovitz
Jill Gans Leder
Lucien Lagrange and Melinda Jakovich-Lagrange
Ms. Patricia R. Lauber
Dr. Warren William Layne
Yohannan Lee
Sheila Fields Leiter
Mr. and Mrs. Mark S. LeMire
Dr. Marc and Cindy Levin
Antonia Lewis-Reese
Mark Liberson and Rodney Becker
Susan Longworth
The Lubell Family
Dale Lussenden
Michael and Karyn Lutz Family Foundation
Carol Lyons
Ms. Delores Mann
Mark and Wendy Manto
Marty Manuel
Susan and Philip Marineau
Natalie Markoff
Marjorie Martin
Susan McCartney
Craig A. McCaw

Alyson McCollum
McDevitt Law Offices
Madeleine Raymond and Joseph McDonald
McDonald's - Midan Inc.
Rosemary and Dennis McDonnell
Mr. Ric McDonough
Edward and Ann McGrogan
Judge Kathleen McGury
Nicholas T. McIntyre & Kathleen A. McIntyre
Kennon McKinney
Deborah Turner McKissic
Karen McPartland
Mary K. Meigides
Elise Melendez
Jack and Jane Mentzer
Bill and Melanie Metcalf
Christen Meyer
James and David Mizgala
MLS Mailing, Inc.
Timothy and Debra Montgomery
Simon and Carolyn Moore
Trish Morehead
Alex Moreno
Lisa and Barry Moze
Anne Chestney Mudd
John Mulford
Shirley Muller-Booker
Stephen and Carol Mullins
My Car Transport (IL)
Ms. Polly Nash
Lewis Nasher
Robert and Judith Neiman
Fredric Neubauer
Cheryl Nicholson
Yolanda Nieves
Costa Nikolaidis
John O'Gara
Edward H. Oppenheimer
Kimberly Orput
Gerald L. Padbury
Ronna Page
Grayce Papp
Dr. Pamela J. Parker
Timothy Pattison
Louise Pearson
Margaret R. Pendry
Marina Perla and Mojo Trek
Ms. Natalia M. Perry
Nick Peterson
Robert Peterson
David and Pierre Petrich
Laura H. Pichon
Dolphine Pierce
Cathy Pilkington
Cynthia Plouche and Joseph Rafson
Paul and Karen Polin
Frank C. Pond
Ann Poole
Mr. Michael Powers II
Andrea Price
Dr. and Mrs. Richard Prinz
V. Pristera, Jr.

support

psyCATS PC - A Behavioral Health Practice
Nicolas Pullin
Leslyn Quartuccio
Mr. and Mrs. Clifford Rallins
Amada Ramirez
Mr. Riccardo Ramirez and Dr. Nathan Runke
Wesley A. Ramsdale II
The Raymond Family
James A. Ready, Jr.
Mr. David Rehor
John and Myra Reilly
John Reinhardt
Dr. Dianne Renn
Resigno's
Noreen Reynolds
Kim Rice
Misty J. Richmond
Rickover Naval Academy (CPS)
Holly and Mark Riordan
Terry and Celeste Robbins
Courtney Roberts
Mimi and Michael Roberts
Chloe Robinson
Drs. Faith Lagay and Paul Rockey
Paula Rodger
Julian Rodriguez
Joyce Romanoff
The Philip and Myn
Rootberg Foundation
Mimi Rose - In honor of Al Rose*
Sarene L. Rosen
Catherine Rosenberg
Al Rosenbloom
Mr. Adam Ruys
Priscilla Ryan and Frank Battle
Kristin M. Rylko

Salinas Drywall and Painting, Inc.
Valee and Marcus Salone
Natalie Saltiel
Stephan Meyer & Sharon Salveter
San Corporation
Fred and Pamela Sasser
David and Judy Schiffman
Burton J. Schultz
Marilyn Schutz
Steve Scott
Geraldine Sczygiel
Mr. and Mrs. A. William Seegers
Ben and Carly Settle
Ms. Catherine Sewell
Lemuel and Sarah Shaffer
Matt and Sue Shattock
Angus and Graciela Shore
Melissa and Matthew Simpson
Diahann Sinclair
Robert M. Six
David B. and May T. Skinner Foundation
Mary Jo and James Slykas
Dujon C. Smith
Drs. Frank and April Smith
Jeffery Smith
Randy and Geri Smith
Edward and Eileen Soderstrom
Spence Consulting, an IT Company
Elliot and Maureen Spiegel
Diane Sprenger Clark
Patricia Staab
Ms. Helena Stancikas
Waymon and Cheryl Starks
Jeannine Stearns
Peggy Steffy

Veronika and Fred Steingraber
John and Eileen Sterling
Patty Sternberg
Story Jam
Paul Oakley Stovall
Studio A
James Suprenant
Sruthi Swaminathan
Rona Talcott and Owen Deutsch
Donna and Paul Tanzer
Dale Taylor
Willa J. Taylor
Betty Taylor
Claudia Tellez
Thomas Terpstra and Ilene Patty
Steven and Kimberly Theiss
Brian and Stephanie Thompson
Jennifer Tipton
Richard Tobiason
Phil and Sandra Tobin
Lisa Todt
Tim Toepke
James Torgerson
John Treece
Barry Tumblin
Shelli D. Ulrich
Joshua Velasquez
Elizabeth Verzo
Patrick Vickery, Jesse Brown VA Medical Center
Carol Vieth
Mr. Matthew Vlies
Paul D. Waas
Lilly Wachowski
Sarah and Michael Wagner
Carol Kyros Walker
William and Carolyn Wardman

The Wardrop Family Fund
Mr. and Mrs. Robert Watson
Olga Weiss and Dr. George Honig
Tom and Mickey Wendorf
Ms. Darla R. Westbrooks
Eileen Whennen
Peggy and Brian White
Wifler Law Group PC
Mr. and Mrs. Robert J. Wilczek
Bob and Jessica William
Louis C. Williams
Gary and Modena Wilson
David and Laura Winters
Robert and Yvette Woell
Sherry Wolfe
Anne Wrider
Mrs. Debra Yates
Susan Schaalman Youdovin and Charlie Shulkin
Scott Young and Robert Litchfield
Sheldon and Bobbi Zabel
Mark Zajackowski
Maxine and Jack Zarrow
Family Foundation
Baron Zhou
Nancy W. Cook and Dan Ziembo
Jean Zuiker

*In Memoriam

support

Community Partners

Goodman Theatre's education and civic practice initiatives would not be possible without the ongoing support and cooperation of our community partners. We are grateful for their commitment and generosity.

Ovation Society

All-Stars Project of Chicago
Chicago Literacy Alliance
Chicago Park District
Department of Community Engagement, Cook County Sheriff's Office
Disney Theatrical Group
DuSable Museum of African American History
God Can Ministries UCC, Ford Heights
Greater Institutional A.M.E. Church
Hektoen Institute Nurses and Humanities Advisory Committee
Illinois Department of Juvenile Justice's Illinois Youth Centers at Warrenville, Harrisburg, and Chicago
La Brocha Chicago
National Veterans Art Museum
North Center Senior Satellite Center
Pedagogy and Theatre of the Oppressed International
Public Narrative
Sidetrack
Sojourn Theatre and the Center for Performance and Civic Practice
St. Luke's Renaissance
Storycatchers Theater
USO of Illinois

Schools

Academy of Scholastic Achievement
Aspira Antonia Pantoja
Aspira Early College High School
Baker College Prep
Belmont-Cragin Elementary School
Bridgescape Academy - Humboldt Park
CICS ChicagoQuest High School
DeVry University Advantage Academy
Walter H Dyett High School for the Arts
GCE Lab School
Frank L. Gillespie Elementary School
John Charles Haines Elementary School
John Hancock College Prep. High School
William G. Hibbard Elementary School
Innovations HS of Arts Integration
Istituto Health Sciences Career Academy
Gerald Delgado Kanoon Elementary Magnet School
John F. Kennedy High School
Illinois Department of Juvenile Justice School District #428
Kennedy-King College
Latino Youth High School
Stephen T. Mather High School
McKinley Lakeside Leadership HS
Wolfgang A. Mozart Elementary School
Muchin College Prep
Multicultural Arts School
Wendell Phillips Academy High School
Progressive Leadership Academy
Providence Englewood Charter School
Irma C. Ruiz Elementary School
Jonathan Y. Scammon Elementary School
Senn High School
Simeon Career Academy High School
Spry Community Links High School
Taft High School
Truman Middle College
George Washington High School
Harold Washington College
Williams Medical Prep High School
Richard Yates Elementary School

PLAYBILL

PLAYBILL

PLAYBILL